



AMERICAN QUEEN® STEAMBOAT COMPANY

Uniquely American River Cruises



2018 VOYAGES

DISCOVER AMERICA'S
MOST ALL-INCLUSIVE
RIVER CRUISE LINE

SAVE UP TO \$2,400 PER STATEROOM

SEE PAGE 71 FOR DETAILS



THE MIGHTY MISSISSIPPI

EPIC 16- TO 23-DAY VOYAGES

Have you ever wondered what this country looked like to its early explorers and pioneers? Traveling on the Mighty Mississippi and its tributaries aboard the *American Queen* or *American Duchess*, you will be transported back in time to an era of leisure and romantic travel. Storybook American towns and vibrant, bustling cities provide a bit of excitement between peaceful fields of gold, majestic panoramas and high bluffs. There is no better way to see America than from the perspective of the river – for the river has played a tremendous role in the shaping of this beautiful country and the lives of the people who inhabit it. After extensively cruising amidst the charms and gracious style of the *American Queen* or *American Duchess*, you will forever be changed.

CRUISE ADD-ON



Complete your experience with a once-in-lifetime visit to Lake Itasca, the glacier-created birthplace of the Mississippi River, when you add our optional 3-day/2-night City Stay Package to your cruise.

Call or visit us online for package pricing and details.



INCLUDED IN YOUR CRUISE FARE:

- ★ One-night hotel stay to begin your journey with breakfast, taxes, portorage and transfer to the vessel
- ★ Signature Hop-On Hop-Off Shore Excursions in each port of call
- ★ Exclusive City Tours in select ports of call
- ★ Acclaimed entertainment worthy of Broadway
- ★ All onboard meals with regionally-inspired cuisine
- ★ Wine and beer with dinner
- ★ Coffee, tea, cappuccino, espresso, bottled water and soft drinks throughout your voyage
- ★ Wi-Fi/Internet service
- ★ Daily lectures by the Riverlorian, our resident history and culture expert
- ★ Themed voyage entertainment and events

DATES	LENGTH	ROUTE	VESSEL	FROM
Jul 15-Aug 06	23 Days	New Orleans to Minneapolis	<i>American Duchess</i>	\$6,999
Sep 02-17	16 Days	Minneapolis to New Orleans	<i>American Duchess</i>	\$4,999
Aug 05-20	16 Days	Minneapolis to New Orleans	<i>American Queen</i>	\$3,599
Aug 19-Sep 10	23 Days	New Orleans to Minneapolis	<i>American Queen</i>	\$5,199

Fares are listed in U.S. dollars, per guest, double occupancy, with the exception of *American Queen* SI and SO categories. Port Charges: \$358-537.

**FOR FULL ITINERARY DETAILS AND PRICING,
CALL OR VISIT US ONLINE.**

TABLE OF CONTENTS

INTRODUCTION

Our Distinctions	4
<i>Uniquely American Dining</i>	6
<i>Uniquely American Entertainment</i>	8
<i>Uniquely American Experiences</i>	10
Cruise Add-Ons.	12

LOWER MISSISSIPPI RIVER

Introduction and Voyage Map	14
Voyage Calendar Summary.	16
Itineraries	18-25

OHIO, TENNESSEE & CUMBERLAND RIVERS

Introduction and Voyage Map	26
Voyage Calendar Summary.	28
Itineraries	29-39

UPPER MISSISSIPPI & ILLINOIS RIVERS

Introduction and Voyage Map	40
Voyage Calendar Summary.	42
Itineraries	43-49

COLUMBIA & SNAKE RIVERS

Introduction and Voyage Map	50
Voyage Calendar Summary.	52
Itineraries	54-55

OUR PADDLEWHEELERS

<i>American Queen</i> ®	56
<i>American Duchess</i> ™	62
<i>American Empress</i> ®	66
Terms & Conditions.	70
Travel Protection	71

RECENT AWARDS



2017 Gold Winner
Best River Cruise
Line – U.S.



2016 World's Top
River Cruise Lines



2012-2016
Best Shore
Excursions



2015 Editor's Pick:
Best Onboard Dining



2012-2015
Best Cruise Value:
Specialty Cruise Lines

OUR DISTINCTIONS



Discover the most all-inclusive river cruise experience in North America with American Queen Steamboat Company.

ONE-NIGHT HOTEL STAY TO BEGIN YOUR JOURNEY WITH BREAKFAST, TAXES, PORTERAGE AND TRANSFER TO THE VESSEL



ALL ONBOARD MEALS WITH REGIONALLY INSPIRED, EPICUREAN CUISINE IN MULTIPLE DINING VENUES



WINE AND BEER WITH DINNER



WARM HOSPITALITY AND 24-HOUR ROOM SERVICE FROM A FRIENDLY, ALL-AMERICAN STAFF



COFFEE, TEA, CAPPUCCINO, ESPRESSO, BOTTLED WATER
AND SOFT DRINKS THROUGHOUT YOUR VOYAGE



BROADWAY-CALIBER ENTERTAINMENT EACH EVENING
AND SPOTLIGHT GUEST PERFORMANCES



DAILY LECTURES BY THE RIVERLORIAN,
OUR RESIDENT HISTORY AND CULTURE EXPERT



SIGNATURE HOP-ON HOP-OFF SHORE EXCURSIONS
IN EACH PORT OF CALL



OUR OWN DEDICATED FLEET OF DELUXE MOTORCOACHES

UNIQUELY AMERICAN DINING



Dining aboard our vessels is an elevated, epicurean affair that pleases the palate and warms the soul. Our award-winning culinary teams take full advantage of each region's diverse bounty of fresh, local ingredients to fashion uniquely exquisite dishes while our gracious staff charms you with friendly, attentive service. All of our vessels feature 24-hour room service for your comfort and convenience in addition to a magnificent main dining room, as well as an alternative venue in which you can choose to dine for breakfast, lunch and dinner. Each day of your river cruise presents culinary enlightenment and exquisite fare so delicious that you will yearn for the next meal.

Please visit us online to view example menus.

AMERICAN QUEEN

The opulence of the J.M. White Dining Room and the nightly five-course dinner is quite simply unparalleled on the river. The elegant filigree of the soaring, two-deck venue is just one of the many attributes that makes it the appropriate setting to relish cuisine that is sophisticated yet comfortably familiar.

The Front Porch Café is your alternative venue offering the ideal respite for a relaxing al fresco breakfast, lunch or dinner.

AMERICAN EMPRESS

The lavish décor of The Astoria Dining Room is a glorious and elaborate homage to the Pacific Northwest with gilded columns, marble, rich upholstery and crystal chandeliers; the ideal atmosphere for a divine breakfast or lunch and our tantalizing five-course dinner.



Offering a casual breakfast or lunch with both indoor and seasonal outdoor seating, The River Grill & Bar has become a favorite alternative location for guests to enjoy fabulous dishes and take in the majestic scenery. Each evening, this venue transforms into a reservation-only, specialty restaurant where you may enjoy up to two dinner reservations per cruise.

AMERICAN DUCHESS

Savor each succulent bite, swirl and sip amidst the rich ambiance of The Grand Dining Room. Furnished with a refined décor of extravagant, custom Italian fabrics and rich walnut accents, you will enjoy tantalizing meals morning, noon and night in this exquisite venue which comfortably accommodates all guests. Sweeping windows reveal a gorgeous backdrop of river views to further enhance the glory of your dining experience. Open seating is available for all meals allowing you the freedom to dine when you wish during open venue hours.

Equally decadent with a more intimate vibe is our alternative venue, The River Club & Terrace. Its lofty feel and classy décor of hand-blown Murano glass, along with an open-view kitchen and double-sided bar, sets the tone for splendid dining and delightful cocktails. The River Club & Terrace transforms into a reservation-only, specialty restaurant in the evening and accommodates half the capacity of The Grand Dining Room, affording you a cozy ambiance. The outdoor terrace features covered, resort-style seating for both leisurely lounging and relaxed dining.

BEVERAGE PACKAGE

While beer and table pouring wine is one of our signature inclusions with dinner, our All-Inclusive Beverage Package affords you carefree enjoyment of your favorite spirits, beer and wine by the glass throughout your voyage. Ask your reservations agent for details and pricing.

UNIQUELY AMERICAN ENTERTAINMENT



Envision your journey with us as more than a river cruise to iconic cities and quaint small towns; envision it as being one of mind, body and soul. Each day and evening lends the opportunity to delve into the dramatic history and musical influences of the regions in which we travel, exposing you to an onboard experience that penetrates the realm of extraordinary and transcends into something beyond measure.

Whether you are engaged in a themed voyage special event, a captivating tale told by the Riverlorian or an energized musical performance led by our top entertainers, each vessel hosts a wealth of impressive entertainment that is sure to satisfy.

AMERICAN QUEEN

The palatial Grand Saloon is two decks tall and mirrors the small-town opera houses of the 19th century with details modeled after Ford's Theatre. Rousing musical revues and high-energy cabaret shows from our immensely talented and energetic cast take center stage each evening. After the show, dance and swing to stellar performances of jazz, blues, ragtime, bluegrass, country or rock and roll in the handsome Engine Room Bar. A lively piano sing-along may lure you to the Main Deck Lounge.

AMERICAN EMPRESS

The Show Lounge boasts rich décor, enormous crystal chandeliers, comfortable seating and an elevated ceiling which provides the perfect venue for our acclaimed entertainment. A more intimate atmosphere can be found in the vessel's Paddlewheel Lounge; a popular alternate venue featuring



smooth solo performances and soft piano music in the afternoon. Take pleasure in this cozy atmosphere which is ideal for sharing pre-dinner cocktails. For your late-night entertainment, we pick up the pace and play all of your favorites as you dance the night away.

AMERICAN DUCHESS

The Show Lounge is your destination for entertainment, dancing and enlightenment. This palatial room exhibits single-seating shows, big-screen movie events, live musical performances with free-range dancing and, most notably, our distinguished historical dialogue. Whether you are enjoying a special event steeped in the gritty, urban sounds of the Chicago Blues or a dazzling, Broadway-style performance, you are treated to outstanding entertainment in an atmosphere of sheer warmth and elegance.

RIVERLORIANS

As history plays such a large part of your river cruise experience, Riverlorians, our resident history and culture experts, are onboard every cruise to impart the legends and lore of the river on which you are cruising. Attend an enlightening lecture, relive a tale from Mark Twain or enjoy a recounting of the Lewis & Clark Expedition for a spellbinding evening.

THEMES

Many itineraries are uniquely themed and feature special entertainment to create a river cruise unlike any other. Join us on one of our music themed cruises such as *The 50s and 60s Remembered* for a fun-filled trip down memory lane. If you have been dreaming of getting away for the holidays, our *Thanksgiving Festival, Holiday – Christmas Markets* or *New Year's Celebration* could be the ideal vacation you have been waiting for.

UNIQUELY AMERICAN EXPERIENCES



From all perspectives, our vessels are testimonies to the floating palaces of long ago and a culmination of their finest qualities. Grand in every sense of the word, you will discover a blend of every bold paddlewheeler innovation along with pristine, authentic design. Each vessel boasts an inclusive range of amenities and hospitable services to deliver a uniquely American experience for a truly rich river cruising vacation.

The main attraction on any American Queen Steamboat Company cruise is the award-winning shore excursions. Shore excursions, both included and premium, are thoughtfully designed to optimize the guest experience by providing plenty of activity and endless enjoyment. Our own dedicated fleet of deluxe motorcoaches and talented shore excursions staff await you at the vessel's dock in each port of call offering hassle-free access to some of the most historically and culturally significant attractions in America.

INCLUDED SHORE EXCURSIONS

Regardless of which vessel you choose for your river cruise vacation, each voyage includes our signature Hop-On Hop-Off guided shore excursions – your ticket to experience the freedom of choosing your own path in great river cities with selected admissions and narrated tours. You will receive a map of the Hop-On Hop-Off tour route with numbered stops and local attractions. As you enjoy the narrated tour throughout each port of call, the motorcoach will make scheduled stops along the tour route where you may hop off and visit your preferred attraction(s).

For example, in the Pacific Northwest we take you to the top historical museums, Sacajawea State Park and the towering Astoria Column – just to name a few. Traveling through America's heartland and the Deep South will give you access to beautifully restored mansions, historic plantations and so much more.



PREMIUM SHORE EXCURSIONS

While our included Hop-On Hop-Off guided tours are a great way to get acquainted with the historically rich ports that you will encounter on your river cruise journey, our award-winning Premium Shore Excursions offer you an opportunity to delve deeper into your specific interests. An extensive list of Premium Shore Excursions are available for purchase and provide comprehensive, in-depth and rare experiences at an amazing value.

Civil War history buffs may want to grasp the full essence of Vicksburg, Mississippi, with our “On the Front Lines of the Civil War” premium experience; whereas wine enthusiasts can take full advantage of the Pacific Northwest’s fertile wine country on our “Wine and Spirits on Red Mountain” premium experience. Please visit us online to explore all of the options that are available to you in each port of call.

INDEPENDENT EXPLORATION

Complimentary bicycles and helmets are also available at each port on your river cruise. With so many picturesque towns along the rivers, skip the onboard Fitness Center and get your daily dose of cardio by cycling around on an independent exploration of the riverfront, shops and sites. Our onboard staff will gladly provide you with local attraction maps and guides to help with your planning and navigation of each port.

You will discover that there is always plenty to do between dawn and dusk both onboard and ashore. From Pilot House tours to old-fashioned sing-alongs and enchanting discussions with our insightful Riverlorian, just one voyage with us and you will agree that life on the river has never been better.

Complimentary Wi-Fi is available to all guests aboard our vessels.

PREMIUM SHORE EXCURSIONS

INCLUDED TOURS ARE A GREAT WAY TO GET ACQUAINTED WITH THE HISTORICALLY RICH PORTS THAT YOU WILL ENCOUNTER ON YOUR VOYAGE, BUT OUR PREMIUM SHORE EXCURSIONS OFFER YOU AN OPPORTUNITY TO DELVE DEEPER INTO YOUR SPECIFIC INTERESTS. VISIT US ONLINE FOR DETAILED INFORMATION ON ALL OF THE EXPERIENCES AVAILABLE TO YOU THROUGHOUT THE REGIONS IN WHICH WE TRAVEL.

LOWER MISSISSIPPI RIVER



NOTTOWAY, LA

Grand Southern Plantation Tour

MEMPHIS, TN

The Memphis City Tour including Graceland Mansion

ST. FRANCISVILLE, LA

Redemption & Rehabilitation at Angola Penitentiary

VICKSBURG, MS

On the Front Lines of the Civil War

GREENVILLE, MS

Small Towns, Big Legends – The Story of B.B. King

NATCHEZ, MS

Entertaining in Southern Style with Ginger Hyland

OHIO, TENNESSEE AND CUMBERLAND RIVERS



SAVANNAH, TN

Shiloh National Military Park

FLORENCE, AL

Sweet Home Alabama: A Musical Journey through Time

PADUCAH, KY

Check-in Along the Chitlin' Trail

LOUISVILLE, KY

Kentucky Derby Tour

BRANDENBURG, KY

An American Leader: The Life and Presidency of Abraham Lincoln

NASHVILLE, TN

Nashville Music City USA Tour

UPPER MISSISSIPPI AND ILLINOIS RIVERS



HANNIBAL, MO

Mississippi Mud... A Hands-On Experience

ALTON, IL

In Lincoln's Footsteps

PRAIRIE DU CHIEN, WI

Pearls of the Mississippi

DUBUQUE, IA

Galena, Illinois, including the Home of General Ulysses S. Grant

RED WING, MN

On Eagle's Wings

BETTENDORF, IA (QUAD CITIES)

The John Deere Experience

COLUMBIA AND SNAKE RIVERS



RICHLAND, WA (TRI-CITIES)

Wine and Spirits on Red Mountain

THE DALLES, OR

Art of The Dalles: From Maryhill Museum to the Vineyard

VANCOUVER, WA

Mount St. Helens Tour

CLARKSTON, WA

Hells Canyon Scenic Jet Boat Experience

STEVENSON, WA

The Ultimate Pacific Northwest Experience

ASTORIA, OR

The Lewis and Clark Experience



OUR HOTEL STAYS

OUR DESIGNATED HOTEL PROPERTIES ARE THOUGHTFULLY SELECTED AS A COMPLEMENT TO THE UNIQUE EXPERIENCES THAT YOU WILL ENCOUNTER ON YOUR LAVISH JOURNEY THROUGH AMERICA. EACH HOTEL PROPERTY IS CONVENIENTLY LOCATED TO PROVIDE YOU WITH EASY ACCESS TO THE CITY'S MOST ICONIC, LOCAL ATTRACTIONS, CULTURAL CENTERS AND DINING ESTABLISHMENTS.



NEW ORLEANS, LA
The Roosevelt New Orleans



MEMPHIS, TN
The Peabody Hotel



ST. LOUIS, MO
Union Station Hotel

ADD A HOTEL NIGHT

While many of our cruises begin with an included pre-cruise hotel night, you may wish to extend your vacation experience before or after your river cruise.

Our pre- and post-cruise hotel programs are easily and affordably combined with your cruise. All of our hotel package fares are per guest, based on double occupancy and include accommodations for one or two nights, taxes, portorage, full American breakfast and transfers between the hotel and the vessel.

For hotels specific to your desired itinerary, please visit us online or check with your reservations agent.



LOUISVILLE, KY
The Brown Hotel



SPOKANE, WA
Historic Davenport Hotel



NASHVILLE, TN
Gaylord Opryland Resort

IMMERSIVE CITY STAYS

OUR 3-DAY/2-NIGHT CITY STAY PACKAGES ARE DESIGNED TO ENRICH YOUR OVERALL CRUISE EXPERIENCE BY AFFORDING YOU THE OPPORTUNITY TO ENHANCE YOUR MAGNIFICENT JOURNEY WITHOUT THE HASSLE OF MAKING YOUR OWN ARRANGEMENTS. EACH PACKAGE EXPOSES YOU TO THE HIGHLIGHTS OF THE CITY IN WHICH YOU ARE STAYING WHILE PROVIDING REMARKABLE INCLUSIONS AND UPSCALE ACCOMMODATIONS AT AN INCREDIBLE VALUE. VISIT US ONLINE FOR FULL PACKAGE DETAILS.



NEW ORLEANS, LA
The Big Easy

- ★ **MEMPHIS, TN:** *American Music*
- ★ **CHICAGO, IL:** *Chicago Gems*
- ★ **SPOKANE, WA:** *Naturally Nice*
- ★ **MINNEAPOLIS, MN:** *Headwaters of the Mississippi*



PORTLAND, OR
The Rose City



MEMPHIS ●

Arkansas River

Mississippi River

● Helena

● Greenville

● Vicksburg

● Grand Gulf

● Natchez

● St. Francisville

● Baton Rouge

● Nottoway

● Oak Alley

● **NEW ORLEANS**

THE LOWER MISSISSIPPI RIVER

THE RIVER THAT DEFINES A NATION

The lower stretch of the Mississippi, from carefree New Orleans to vibrant Memphis, is the river of Legends - the river of centuries-old shaded oak trees, elegant antebellum plantations, cobblestone streets and Victorian mansions. Hear the river's music in rock and roll, blues, jazz and zydeco and savor its culinary diversity with a host of distinctive Creole and Cajun delights.

Celebrate New Orleans' unabashed and unapologetic joy in the fine restaurants and sidewalk cafés of the French Quarter, the jazz clubs lining Bourbon Street and the strolling musicians in Jackson Square. Music is also the heart and soul of Memphis - from Elvis' inspiring Graceland to the blues joints of Beale Street. The city's National Civil Rights Museum chronicles a long journey to freedom and the Stax Museum of American Soul Music records the rise of a beloved musical art form.

Between these glittering cities is a necklace of traditional plantations and homes. Oak Alley transports you back to the era of hoop skirts, cotillions and cotton fields. The flowers, fountains and pathways found on Nottoway Plantation are a testament to the Louisiana way of life before the Civil War. Natchez, Mississippi's captivating historic district shines in the lovingly restored homes of Magnolia Hall, Rosalie Mansion and the William Johnson House.

Thousands of tombstones which mark the fallen in Vicksburg, Mississippi, reflect the tragic sacrifices of the Civil War. French Canadian fur trappers defined Cajun culture in bold Baton Rouge, Louisiana, while the lost settlement of Bayou Sara below the bluffs of St. Francisville, Louisiana, was once the busiest pre-Civil War port between New Orleans and Memphis.

Inhale the sweet fragrance of magnolia blossoms, relax in a rocking chair with a glass of sweet tea and watch the essence of the south unfold around you.



2018 VOYAGE CALENDAR SUMMARY

The Lower Mississippi River

AMERICAN DUCHESS

Voyage Date	Vessel	Total Days	Fares From	Itinerary	Theme	Page
Jan 07	AD	9	1,999	New Orleans to Memphis	<i>Antebellum South</i>	18
Jan 14	AD	9	1,999	Memphis to New Orleans	<i>Antebellum South</i>	19
Jan 21	AD	9	1,999	New Orleans to Memphis	<i>Antebellum South</i>	18
Jan 28	AD	9	2,199	Memphis to New Orleans	<i>Antebellum South</i>	19
Feb 18	AD	9	2,699	Roundtrip New Orleans	<i>Southern Sampler</i>	20
Feb 25	AD	9	2,699	New Orleans to Memphis	<i>Springtime in the South</i>	18
Mar 04	AD	9	2,799	Memphis to New Orleans	<i>Springtime in the South</i>	19
Mar 11	AD	9	2,799	New Orleans to Memphis	<i>Springtime in the South</i>	18
Mar 18	AD	9	2,799	Memphis to New Orleans	<i>Springtime in the South</i>	19
Mar 25	AD	9	2,699	New Orleans to Memphis	<i>Springtime in the South/Easter</i>	18
Apr 02	AD	8*	2,799	Memphis to New Orleans	<i>Springtime in the South</i>	19
Apr 08	AD	9	2,999	Roundtrip New Orleans	<i>Southern Sampler</i>	20
Apr 15	AD	9	2,999	New Orleans to Memphis	<i>Springtime in the South</i>	18
May 13	AD	9	2,999	Memphis to New Orleans	<i>Antebellum South</i>	19
May 20	AD	9	2,999	New Orleans to Memphis	<i>Antebellum South</i>	18
May 27	AD	9	2,999	Memphis to New Orleans	<i>Antebellum South</i>	19
Jun 03	AD	9	2,999	New Orleans to Memphis	<i>Antebellum South</i>	18
Jun 10	AD	9	2,999	Memphis to New Orleans	<i>Antebellum South</i>	19
Jun 17	AD	9	2,999	New Orleans to Memphis	<i>Antebellum South</i>	18
Jul 15	AD	23	6,999	New Orleans to Red Wing (Minneapolis)	<i>The Mighty Mississippi</i>	2
See page 2 for the theme overview. For complete day-by-day itinerary, visit us online.						
Sep 16	AD	9	2,999	New Orleans to Memphis	<i>Antebellum South</i>	18
Sep 23	AD	9	2,999	Memphis to New Orleans	<i>Antebellum South</i>	19
Sep 30	AD	9	2,999	New Orleans to Memphis	<i>Antebellum South</i>	18
Oct 07	AD	9	2,999	Memphis to New Orleans	<i>Antebellum South</i>	19
Oct 14	AD	9	2,999	New Orleans to Memphis	<i>Antebellum South</i>	18
Oct 21	AD	9	2,999	Memphis to New Orleans	<i>Antebellum South</i>	19
Oct 28	AD	9	2,999	New Orleans to Memphis	<i>Antebellum South</i>	18
Dec 16	AD	9	2,699	Memphis to New Orleans	<i>American Music Cruise</i>	19
Dec 23	AD	8	2,699	Roundtrip New Orleans	<i>Christmas Cruise</i>	20
Dec 30	AD	5*	1,499	Roundtrip New Orleans	<i>New Year's Celebration</i>	25

*No Pre-Cruise Hotel Night

2018 VOYAGE CALENDAR SUMMARY

The Lower Mississippi River

AMERICAN QUEEN

Voyage Date	Vessel	Total Days	Fares From	Itinerary	Theme	Page
Feb 19	AQ	5	799	Roundtrip New Orleans	<i>The 50s and 60s Remembered</i>	21
Feb 22	AQ	5	799	Roundtrip New Orleans	<i>The 50s and 60s Remembered</i>	21
Feb 25	AQ	9	1,999	Roundtrip New Orleans	<i>Big Band</i>	22
Mar 04	AQ	9	1,999	New Orleans to Memphis	<i>Antebellum South</i>	23
Mar 11	AQ	9	1,999	Memphis to New Orleans	<i>Southern Literature</i>	24
Mar 18	AQ	9	1,999	New Orleans to Memphis	<i>Antebellum South</i>	23
Mar 25	AQ	9	1,999	Memphis to New Orleans	<i>Music of America</i>	24
Apr 01	AQ	9	1,999	New Orleans to Memphis	<i>Southern Culinary Experience</i>	23
Apr 08	AQ	9	1,999	Memphis to New Orleans	<i>Antebellum South</i>	24
Apr 15	AQ	9	1,999	New Orleans to Memphis	<i>Antebellum South</i>	23
Apr 22	AQ	9	1,999	Memphis to New Orleans	<i>Antebellum South</i>	24
Apr 29	AQ	9	1,999	New Orleans to Memphis	<i>Antebellum South</i>	23
May 06	AQ	9	1,999	Memphis to New Orleans	<i>Antebellum South</i>	24
May 13	AQ	9	1,999	New Orleans to Memphis	<i>Antebellum South</i>	23
May 20	AQ	9	1,999	Memphis to New Orleans	<i>Antebellum South</i>	24
May 27	AQ	9	1,999	New Orleans to Memphis	<i>Antebellum South</i>	23
Jun 03	AQ	9	1,999	Memphis to New Orleans	<i>Antebellum South</i>	24
Jun 10	AQ	9	1,999	New Orleans to Memphis	<i>Antebellum South</i>	23
Jun 17	AQ	9	1,999	Memphis to New Orleans	<i>Antebellum South</i>	24
Jun 24	AQ	9	1,999	New Orleans to Memphis	<i>Civil War</i>	23
Aug 19	AQ	23	5,199	New Orleans to Red Wing (Minneapolis)	<i>The Mighty Mississippi</i>	2
<p>See page 2 for the theme overview. For complete day-by-day itinerary, visit us online.</p>						
Sep 30	AQ	9	1,999	Memphis to New Orleans	<i>Antebellum South</i>	24
Oct 07	AQ	9	1,999	New Orleans to Memphis	<i>Antebellum South</i>	23
Oct 14	AQ	9	1,999	Memphis to New Orleans	<i>Antebellum South</i>	24
Oct 21	AQ	9	1,999	New Orleans to Memphis	<i>Antebellum South</i>	23
Oct 28	AQ	9	1,999	Memphis to New Orleans	<i>Antebellum South</i>	24
Nov 04	AQ	9	1,999	New Orleans to Memphis	<i>Antebellum South</i>	23
Nov 11	AQ	9	1,999	Memphis to New Orleans	<i>Antebellum South</i>	24
Nov 18	AQ	9	1,999	New Orleans to Memphis	<i>Thanksgiving Festival</i>	23
Nov 25	AQ	9	1,999	Memphis to New Orleans	<i>Southern Musical Heritage</i>	24
Dec 02	AQ	9	1,999	New Orleans to Memphis	<i>Holiday-Christmas Markets</i>	23
Dec 09	AQ	9	1,999	Memphis to New Orleans	<i>Holiday-Christmas Markets</i>	24
Dec 16	AQ	9	1,999	New Orleans to Memphis	<i>Holiday-Christmas Markets</i>	23
Dec 23	AQ	9	1,999	Memphis to New Orleans	<i>Creole Christmas</i>	24
Dec 30	AQ	5	899	Roundtrip New Orleans	<i>New Year's Celebration</i>	21

NEW ORLEANS TO MEMPHIS

Aboard the All-Suite American Duchess



9-DAY VOYAGE

SOAK IN THE ANTEBELLUM SPIRIT AS YOU EXPERIENCE THE BEST PLANTATIONS, LOVINGLY RESTORED MANSIONS AND CAPTIVATING CIVIL WAR HISTORY.

Day 1: New Orleans, LA

Your journey begins with a boutique hotel stay in New Orleans. Take the evening to get acquainted with this culturally diverse city.

Day 2: New Orleans, LA

Depart 5:00 p.m.
Explore New Orleans at your leisure or consider a Pre-Cruise Premium Shore Excursion with afternoon transfer to the *American Duchess*.

Day 3: Nottoway, LA

Tour Nottoway Plantation, the south's largest, most glorious remaining Antebellum mansion with a rich history dating back to 1859.

Day 4: St. Francisville, LA

Tour iconic locations such as Old Market Hall and Royal Street or discover the deep ancestral ties of two traditional southern plantations on our Premium Shore Excursion: Plantations of the Back Roads.

Day 5: Natchez, MS

First inhabited by Natchez Indians and French explorers, this oldest city on the Mississippi will captivate you with tours of lovingly restored mansions such as Rosalie, Magnolia Hall and Stanton Hall.

Day 6: Vicksburg, MS

Described as the "Key to the South" by Abraham Lincoln, this southern gem delivers a rich history unlike any other Civil War city.

Day 7: Greenville, MS

Discover the town's interesting history at the William Alexander Percy Memorial Library featuring an exhibit of books and manuscripts which honor the literary heritage of Greenville's renowned authors.

Day 8: River Cruising

Gaze at the beautiful landscapes as you mingle with fellow guests and exchange stories of the unique experiences that you have encountered on your journey along the Mississippi River.

Day 9: Memphis, TN

Disembark 8:00 a.m.
Enjoy Memphis at your leisure or consider a Post-Cruise Premium Shore Excursion with airport transfer.

2018 AMERICAN DUCHESS VOYAGE DATES

SUITE CATEGORY	OS	LFS	DS	VS	IS
Jan 07*, 21*	\$5,999	\$4,499	\$3,999	\$2,999	\$1,999
Feb 25; Mar 25	\$8,499	\$6,699	\$6,299	\$4,499	\$2,699
Mar 11	\$8,999	\$7,099	\$6,599	\$4,699	\$2,799
Apr 15*; May 20; Jun 03, 17; Sep 16, 30; Oct 14, 28	\$9,499	\$7,499	\$6,999	\$4,999	\$2,999

*Itinerary varies slightly – Day 4 will be Baton Rouge, LA.

Fares are listed in U.S. dollars, per guest, double occupancy. Port Charges: \$179.

HIGHLIGHTS

- ★ *Included pre-cruise boutique hotel stay*
- ★ *The largest accommodations on U.S. rivers*
- ★ *Open seating and specialty dining venues*

MEMPHIS TO NEW ORLEANS

Aboard the All-Suite American Duchess

9-DAY VOYAGE

DISCOVER THE JEWELS OF THE LOWER MISSISSIPPI ON THIS INCREDIBLE JOURNEY WHICH CARRIES YOU TO GRACIOUS TOWNS DISPLAYING PALATIAL MANSIONS, OLD-WORLD ARCHITECTURE, RICH HISTORY AND FINE LOCAL CUISINE.

Day 1: Memphis, TN

Your journey begins with a boutique hotel stay in downtown Memphis.

Day 2: Memphis, TN

Depart 5:00 p.m.

Explore Memphis at your leisure or consider a Pre-Cruise Premium Shore Excursion with afternoon transfer to *American Duchess*.

Day 3: Helena, AR

Quaint Helena would appear to be a town that time forgot, but today it is in the throes of a revival. Experience the best of this small southern town on

our Premium Shore Excursion: Mississippi Delta Gospel and the Birthplace of the Blues.

Day 4: Vicksburg, MS

Described as the “Key to the South” by Abraham Lincoln, this southern gem delivers a rich history unlike any other Civil War city.

Day 5: Natchez, MS

First inhabited by Natchez Indians and French explorers, this oldest city on the Mississippi will captivate you with tours of lovingly restored mansions such as Rosalie, Magnolia Hall and Stanton Hall.

Day 6: Baton Rouge, LA

Delight in the seamless blend of past and present with something unique at every turn. From the museums and architecture to the shops and local cuisine, you will thoroughly enjoy a day of exploration in this amazing city.

Day 7: St. Francisville, LA

Tour iconic locations such as Old Market Hall and Royal Street or experience life inside Angola Prison on our award-winning Premium Shore Excursion.

Day 8: Nottoway, LA

Tour Nottoway Plantation, the south’s largest, most glorious remaining Antebellum mansion with a rich history dating back to 1859.

Day 9: New Orleans, LA

Disembark 8:00 a.m.

Enjoy New Orleans at your leisure or consider a Post-Cruise Premium Shore Excursion with airport transfer.



CRUISE ADD-ONS

See pages 12-13 for Premium Shore Excursions, Hotel Nights and Immersive City Stays.

2018 AMERICAN DUCHESS VOYAGE DATES

SUITE CATEGORY	OS	LFS	DS	VS	IS
Jan 14	\$5,999	\$4,499	\$3,999	\$2,999	\$1,999
Jan 28	\$6,799	\$5,499	\$5,199	\$3,599	\$2,199
Dec 16	\$8,499	\$6,699	\$6,299	\$4,499	\$2,699
Mar 04, 18; Apr 02*	\$8,999	\$7,099	\$6,599	\$4,699	\$2,799
May 13, 27; Jun 10; Sep 23; Oct 07, 21	\$9,499	\$7,499	\$6,999	\$4,999	\$2,999

*8 days; No pre-cruise hotel night. Fares are listed in U.S. dollars, per guest, double occupancy. Port Charges: \$159-179.

HIGHLIGHTS

- ★ *Included pre-cruise boutique hotel stay*
- ★ *The largest accommodations on U.S. rivers*
- ★ *Open seating and specialty dining venues*

ROUNDRIP NEW ORLEANS

Aboard the All-Suite American Duchess

9-DAY VOYAGE

GET ACQUAINTED WITH THE ETERNAL CHARMS OF THE DEEP SOUTH WHILE EXPERIENCING THE COMPLETE JOY AND LUXURY OF AN *AMERICAN DUCHESS* CRUISE. TRULY SAVOR EACH MOMENT OF THIS MESMERIZING VOYAGE THAT TAKES YOU TO HISTORIC PORTS BRIMMING WITH ICONIC ATTRACTIONS, STATELY MANSIONS AND HIDDEN NATIONAL TREASURES.



Day 1: New Orleans, LA

Your journey begins with a boutique hotel stay in New Orleans. The evening is yours to get acquainted with this culturally diverse city steeped in history and brimming with culinary legacies of flavor.

Day 2: New Orleans, LA

Depart 5:00 p.m.

Explore New Orleans at your leisure or consider a Pre-Cruise Premium Shore Excursion with afternoon transfer to the *American Duchess*.

Day 3: River Cruising

Day 4: St. Francisville, LA

Tour iconic locations such as Old Market Hall and Royal Street or discover the deep

ancestral ties of two traditional southern plantations on our Premium Shore Excursion: Plantations of the Back Roads

Day 5: Natchez, MS

First inhabited by Natchez Indians and French explorers, this oldest city on the Mississippi will captivate you with tours of lovingly restored mansions such as Rosalie, Magnolia Hall and Stanton Hall.

Day 6: Vicksburg, MS

Described as the “Key to the South” by Abraham Lincoln, this southern gem delivers a rich history unlike any other Civil War city.

Day 7: Grand Gulf, MS

Peer into the past at the 400-acre Grand Gulf Military Park by way of museum displays and numerous historical markers.

Day 8: Nottoway, LA

Tour Nottoway Plantation, the South’s largest, most



glorious remaining Antebellum mansion with a rich history dating back to 1859. In a fabulous location along the Great River Road overlooking the grand Mississippi River, the “White Castle” of the South transports you back to an era of glory and grandeur.

Day 9: New Orleans, LA

Disembark 8:00 a.m.

Enjoy New Orleans at your leisure or consider a Post-Cruise Premium Shore Excursion with airport transfer.

CRUISE ADD-ONS

See pages 12-13 for Premium Shore Excursions, Hotel Nights and Immersive City Stays.

2018 AMERICAN DUCHESS VOYAGE DATES

SUITE CATEGORY	OS	LFS	DS	VS	IS
Feb 18; Dec 23*	\$8,499	\$6,699	\$6,299	\$4,499	\$2,699
Apr 08	\$9,499	\$7,499	\$6,999	\$4,999	\$2,999

*8 days; itinerary varies slightly. Fares are listed in U.S. dollars, per guest, double occupancy. Port Charges: \$159-179.

HIGHLIGHTS

- ★ *Included pre-cruise boutique hotel stay*
- ★ *The largest accommodations on U.S. rivers*
- ★ *Open seating and specialty dining venues*

ROUNDRIP NEW ORLEANS

Aboard the Iconic American Queen



5-DAY VOYAGE

FOR THOSE LOOKING FOR A BRIEF ENCOUNTER WITH THE HISTORIC SOUTH, THIS IS THE PERFECT JOURNEY FOR YOU. EVEN ON THIS ABBREVIATED TOUR YOU WILL FEEL YOUR WORRIES DRIFT AWAY WITH THE RELAXING PACE OF LIFE BOTH ONBOARD AND ASHORE AS YOU VISIT TWO OF THE MOST PROMINENT SOUTHERN PLANTATIONS, NOTTOWAY AND OAK ALLEY.

Day 1: New Orleans, LA

Your journey begins with a deluxe hotel stay in New Orleans. The evening is yours to get acquainted with this culturally diverse city steeped in history and brimming with culinary legacies of flavor.

Day 2: New Orleans, LA

Depart 5:00 p.m.

Explore the city at your leisure or consider purchasing the New Orleans Highlights Tour, our Pre-Cruise Premium Shore Excursion that allows you to experience the city from an intimate, first-person perspective. Board our deluxe motorcoach for a narrated driving tour which takes you to some of the most

iconic attractions in the city including the French Quarter, Jackson Square and the Garden District, where elegant mansions stand as a testament to Greek revival, Italianate and Queen Anne Victorian styles. Your tour will conclude at the *American Queen*.

Day 3: Nottoway, LA

Tour Nottoway Plantation, the south's largest, most glorious remaining Antebellum mansion with a rich history dating back to 1859. In a fabulous location along the Great River Road overlooking the grand Mississippi River, this "White Castle" of the South transports you back to an era of glory and grandeur.

Set amid a natural backdrop of vibrant gardens and 200-year-old oak trees, Nottoway Plantation captivates all with a brilliant blend of true southern hospitality, history and mystery.

Day 4: Oak Alley, LA

Referred to as the "Grande Dame of the Great River Road," Oak Alley combines architectural splendor with the natural canopy of its 300-year-old oak trees. Its splendid atmosphere will remind you of *Gone with the Wind*, giving you the feel that you are on a Hollywood movie set.

Day 5: New Orleans, LA

Disembark 8:00 a.m.

Enjoy New Orleans at your leisure or consider a Post-Cruise Premium Shore Excursion with airport transfer.

ADD A CITY STAY

Immersive 3-day/2-night package available in New Orleans. See page 13 or call for details.

2018 AMERICAN QUEEN VOYAGE DATES

CATEGORY	OS	LS	FS	AAA	AA	A	B	C	D	E	SO	SI
Feb 19, 22	\$3,499	\$2,799	\$2,499	\$1,999	\$1,899	\$1,799	\$1,699	\$1,599	\$1,499	\$799	\$2,299	\$1,199
Dec 30	\$3,899	\$2,999	\$2,799	\$2,199	\$2,099	\$1,999	\$1,899	\$1,799	\$1,599	\$899	\$2,599	\$1,299

Fares are listed in U.S. dollars, per guest, double occupancy, with the exception of SI and SO categories. Port Charges: \$109.

ROUNDRIP NEW ORLEANS

Aboard the Iconic American Queen

9-DAY VOYAGE

SHOWCASING THE DIVERSITY AND DRAMA OF THE LOWER MISSISSIPPI, THIS SPLENDID VOYAGE TAKES YOU FROM THE LEGENDARY JAZZ OF NEW ORLEANS' BOURBON STREET TO THE CHARMS OF NOTTOWAY PLANTATION AND THROUGH THE STORIED PAST OF ST. FRANCISVILLE.

Day 1: New Orleans, LA

Your journey begins with a deluxe hotel stay in New Orleans. The evening is yours to get acquainted with this culturally diverse city steeped in history and brimming with culinary legacies of flavor.

Day 2: New Orleans, LA

Depart 5:00 p.m.

Explore the city at your leisure or consider purchasing the New Orleans Highlights Tour, our Pre-Cruise Premium Shore Excursion that allows you to experience the city from an intimate, first-person perspective.

Day 3: Oak Alley, LA

Referred to as the "Grande Dame of the Great River Road," Oak Alley combines

architectural splendor with the natural canopy of its 300-year-old oak trees.

Day 4: St. Francisville, LA

Tour iconic locations such as Old Market Hall and Royal Street or discover the deep ancestral ties of two traditional southern plantations on our Premium Shore Excursion: Plantations of the Back Roads

Day 5: Natchez, MS

This oldest city on the Mississippi will captivate you with tours of lovingly restored mansions such as Rosalie, Magnolia Hall and Stanton Hall.

Day 6: Vicksburg, MS

Described as the "Key to the South" by Abraham Lincoln,

this southern gem delivers a rich history unlike any other Civil War city.

Day 7: Baton Rouge, LA

Delight in the seamless blend of past and present with something unique at every turn. From the museums and architecture to the shops and local cuisine, you will thoroughly enjoy a day of exploration in this amazing city.

Day 8: Nottoway, LA

Tour Nottoway Plantation, the south's largest, most glorious remaining Antebellum mansion with a rich history dating back to 1859.

Day 9: New Orleans, LA

Disembark 8:00 a.m.

Enjoy New Orleans at your leisure or consider a Post-Cruise Premium Shore Excursion with airport transfer.

CRUISE ADD-ONS

See pages 12-13 for Premium Shore Excursions, Hotel Nights and Immersive City Stays.



2018 AMERICAN QUEEN VOYAGE DATE

CATEGORY	OS	LS	FS	AAA	AA	A	B	C	D	E	SO	SI
Feb 25	\$8,099	\$6,499	\$5,799	\$4,699	\$4,399	\$4,199	\$3,999	\$3,799	\$3,499	\$1,999	\$5,399	\$2,699

Fares are listed in U.S. dollars, per guest, double occupancy, with the exception of SI and SO categories. Port Charges: \$179.

NEW ORLEANS TO MEMPHIS

Aboard the Iconic American Queen



9-DAY VOYAGE

DISCOVER THE EVER-PRESENT ROMANTIC ATMOSPHERE OF THE ANTEBELLUM ERA AT EACH STOP ALONG THIS CAPTIVATING JOURNEY FROM FABULOUS NEW ORLEANS TO THE *AMERICAN QUEEN'S* HOMETOWN OF MEMPHIS.

Day 1: New Orleans, LA

Your journey begins with a deluxe hotel stay in New Orleans.

Day 2: New Orleans, LA *Depart 5:00 p.m.*

Explore New Orleans at your leisure or consider a Pre-Cruise Premium Shore Excursion with afternoon transfer to the *American Queen*.

Day 3: Nottoway, LA

Tour Nottoway Plantation, the south's largest, most glorious remaining Antebellum mansion with a rich history dating back to 1859.

Day 4: St. Francisville, LA

Tour iconic locations such as Old Market Hall and Royal Street or discover the deep ancestral ties of two traditional southern plantations on our Premium Shore Excursion: Plantations of the Back Roads.

Day 5: Natchez, MS

First inhabited by Natchez Indians and French explorers, this oldest city on the Mississippi will captivate you with tours of lovingly restored mansions such as Rosalie, Magnolia Hall and Stanton Hall.

Day 6: Vicksburg, MS

Described as the "Key to the South" by Abraham Lincoln, this southern gem delivers a rich history unlike any other Civil War city.

Day 7: Greenville, MS

Discover the town's interesting history in its many museums, spend a fun time at the new Trop Casino for a day of gaming, or venture out on a Premium Shore Excursion to B.B. King's hometown of Indianola.

Day 8: River Cruising

Treat yourself to a massage in the *American Queen's* Spa or browse the gift shop for that perfect keepsake to remember your fabulous journey.

Day 9: Memphis, TN *Disembark 8:00 a.m.*

Enjoy Memphis at your leisure or consider a Post-Cruise Premium Shore Excursion with airport transfer.

2018 AMERICAN QUEEN VOYAGE DATES

CATEGORY	OS	LS	FS	AAA	AA	A	B	C	D	E	SO	SI
Mar 04, 18	\$8,499	\$6,799	\$6,199	\$4,899	\$4,699	\$4,499	\$4,299	\$3,999	\$3,699	\$1,999	\$5,699	\$2,799
Apr 01, Nov 18	\$8,099	\$6,499	\$5,799	\$4,699	\$4,399	\$4,199	\$3,999	\$3,799	\$3,499	\$1,999	\$5,399	\$2,699
Apr 15, 29; May 13, 27; June 10, 24; Oct 07, 21; Nov 04	\$8,999	\$7,199	\$6,499	\$5,199	\$4,899	\$4,699	\$4,499	\$4,199	\$3,899	\$1,999	\$5,999	\$2,999
Dec 02, 16	\$7,599	\$6,099	\$5,499	\$4,399	\$4,199	\$3,999	\$3,799	\$3,599	\$3,299	\$1,999	\$5,099	\$2,499

Fares are listed in U.S. dollars, per guest, double occupancy, with the exception of SI and SO categories. Port Charges: \$179.

MEMPHIS TO NEW ORLEANS

Aboard the Iconic American Queen

9-DAY VOYAGE

ENCOUNTER AUTHENTIC SOUTHERN CULTURE AS YOU JOURNEY THROUGH LIVING HISTORY AND SOAK IN THE ESSENCE OF THE OLD SOUTH AMID THE BACKDROP OF SUGAR CANE PLANTATIONS AND FERTILE COTTON FIELDS.

Day 1: Memphis, TN

Your journey begins with a deluxe hotel stay in Memphis.

Day 2: Memphis, TN

Depart 5:00 p.m.

Explore Memphis at your leisure or consider a Pre-Cruise Premium Shore Excursion with afternoon transfer to the *American Queen*.

Day 3: Greenville, MS

Discover the town's interesting history in its many museums, spend a fun time at the new Trop Casino for a day of gaming or venture out on a Premium Shore Excursion

to B.B. King's hometown of Indianola.

Day 4: Vicksburg, MS

Described as the "Key to the South" by Abraham Lincoln, this Southern gem delivers a rich history unlike any other Civil War city.

Day 5: Natchez, MS

First inhabited by Natchez Indians and French explorers, this oldest city on the Mississippi will captivate you with tours of lovingly restored mansions such as Rosalie, Magnolia Hall and Stanton Hall.

Day 6: Baton Rouge, LA

From the museums and architecture to the shops and local cuisine, you will thoroughly enjoy a day of exploration in this amazing city.

Day 7: St. Francisville, LA

Tour iconic locations such as Old Market Hall and Royal Street or experience life inside Angola Prison on our award-winning Premium Shore Excursion: Redemption & Rehabilitation at Angola Penitentiary.

Day 8: Nottoway, LA

Tour Nottoway Plantation, the south's largest, most glorious remaining Antebellum mansion with a rich history dating back to 1859.

Day 9: New Orleans, LA

Disembark 8:00 a.m.

Enjoy New Orleans at your leisure or consider a Post-Cruise Premium Shore Excursion with airport transfer.



2018 AMERICAN QUEEN VOYAGE DATES

CATEGORY	OS	LS	FS	AAA	AA	A	B	C	D	E	SO	SI
Mar 11	\$8,499	\$6,799	\$6,199	\$4,899	\$4,699	\$4,499	\$4,299	\$3,999	\$3,699	\$1,999	\$5,699	\$2,799
Mar 25; Nov 25*	\$8,099	\$6,499	\$5,799	\$4,699	\$4,399	\$4,199	\$3,999	\$3,799	\$3,499	\$1,999	\$5,399	\$2,699
Apr 08, 22; May 06, 20; Jun 03, 17; Sep 30; Oct 14, 28; Nov 11	\$8,999	\$7,199	\$6,499	\$5,199	\$4,899	\$4,699	\$4,499	\$4,199	\$3,899	\$1,999	\$5,999	\$2,999
Dec 09*, 23*	\$7,599	\$6,099	\$5,499	\$4,399	\$4,199	\$3,999	\$3,799	\$3,599	\$3,299	\$1,999	\$5,099	\$2,499

*Itinerary varies slightly – call for details. Fares are listed in U.S. dollars, per guest, double occupancy, with the exception of SI and SO categories. Port Charges: \$179.

ROUNDRIP NEW ORLEANS

Aboard the All-Suite American Duchess

5-DAY VOYAGE

FEEL YOUR WORRIES DRIFT AWAY ON THIS BRIEF ENCOUNTER WITH THE HISTORIC SOUTH AS YOU EXPERIENCE THE GRANDEUR OF A FABULOUS NEW YEAR'S EVE CELEBRATION ABOARD THE MOST LUXURIOUS RIVERBOAT THAT HAS EVER GRACED THE STORIED WATERS OF THE MISSISSIPPI RIVER.

Day 1: New Orleans, LA

Depart 5:00 p.m.

Board the *American Duchess* in exciting New Orleans, Louisiana, and settle in for your magnificent journey.

Day 2: River Cruising

Gaze at the beautiful landscapes and small river towns as you mingle with fellow guests and discuss the unique aspects of river life. If you fancy a moment for yourself, retreat to The Lincoln Library adorned with ornate bookcases stocked with an imaginative selection. Take hold of a literary classic, curl up on a plush chair in a cozy corner and relish every

moment of serenity. However you wish to spend your day, make it your own and revel in every moment. The evening brings a magical gala where you will be surrounded in elegant décor, glittering confetti and the uplifting refrains of "Auld Lang Syne." Raise a glass of champagne and ring in the New Year with a memorable toast amongst newfound friends.

Day 3: Baton Rouge, LA

Delight in the seamless blend of past and present with something unique at every turn. From the museums and architecture to the shops and local cuisine, you will thoroughly enjoy a day of exploration in this amazing city.

Day 4: Nottoway, LA

Tour Nottoway Plantation, the south's largest, most glorious remaining Antebellum mansion with a rich history dating back to 1859. In a fabulous location along the Great River Road overlooking the grand Mississippi River, the "White Castle" of the South transports you back to an era of glory and grandeur. Set amid a natural backdrop of vibrant gardens and 200-year-old oak trees, Nottoway Plantation captivates with a brilliant blend of southern hospitality, history and mystery.

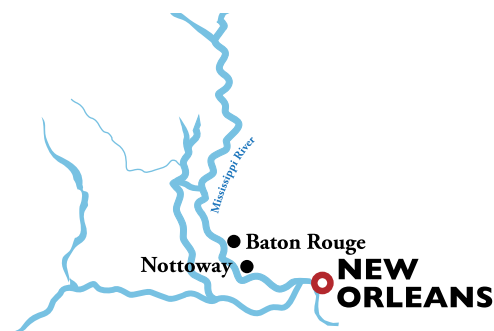
Day 5: New Orleans, LA

Disembark 8:00 a.m.

Enjoy New Orleans at your leisure or consider a Post-Cruise Premium Shore Excursion with airport transfer.

ADD A CITY STAY

Immersive 3-day/2-night package available in New Orleans. See page 13 or call for details.



2018 AMERICAN DUCHESS VOYAGE DATES

SUITE CATEGORY	OS	LFS	DS	VS	IS
Dec 30 <i>No pre-cruise hotel night.</i>	\$4,899	\$3,799	\$3,499	\$2,499	\$1,499

Fares are listed in U.S. dollars, per guest, double occupancy. Port Charges: \$129.

HIGHLIGHTS

- ★ *The first loft suites*
- ★ *The largest accommodations on U.S. rivers*
- ★ *Open seating and specialty dining venues*



THE OHIO, TENNESSEE & CUMBERLAND RIVERS

A VOYAGE OF DISCOVERY

Discover America's cultural quilt in the cities and towns of the Ohio, Tennessee and Cumberland Rivers. From Civil War battlefields, forts and homesteads to quaint main streets and friendly smiles, this region will welcome you with open arms and enrich you with its storied history and legends of famous frontiersmen.

Relive the drama of the Civil War as you journey from the top of Lookout Mountain in Chattanooga to the battlefields of Shiloh National Military Park. Step back to the Revolutionary War in Wheeling, West Virginia, and learn how the British tried to capture the fort in 1782. Feel the pulse of country music in Nashville at the stately Grand Ole Opry and dive into history at the home of President Andrew Jackson.

Get onboard for our exciting return to Pittsburgh – the largest inland port in the United States. Experience the thrill of the Kentucky Derby at Churchill Downs in Louisville and explore the centuries-old tradition of bourbon making which has flavored life in the Bluegrass State since the days of Thomas Jefferson. Few artists evoke the spirit of young America like John James Audubon – view the extensive collection of his art and memorabilia preserved at the national park and museum in Henderson.

Charming Maysville is the gateway to Kentucky's Bluegrass Region Walk and was a key stop on the Underground Railroad. In Marietta, Ohio, Harmar Village is a wonderland of brick streets, lampposts, restored train cars and historic buildings that is now home to welcoming shops, eateries and museums.

We invite you to join us on an enriching voyage of discovery which reveals the kaleidoscope of big cities and small towns showcasing the best of American ingenuity and courage.



2018 VOYAGE CALENDAR SUMMARY

The Ohio, Tennessee and Cumberland Rivers

AMERICAN DUCHESS

Voyage Date	Vessel	Total Days	Fares From	Itinerary	Theme	Page
Apr 22	AD	9	2,999	Memphis to Louisville <i>Paducah, Owensboro, Brandenburg, Madison, Louisville</i>	The Art of Quilting	29
Apr 29	AD	9	2,999	Louisville to Cincinnati <i>Madison, Louisville, Brandenburg, Owensboro, Louisville</i>	Derby Cruise Sold Out	30
May 06	AD	9	2,999	Cincinnati to Memphis <i>Madison, Louisville, Brandenburg, Paducah, New Madrid</i>	Bourbon	31
Nov 04	AD	9	2,999	Memphis to Nashville <i>Ashport Landing, New Madrid, Paducah, Dover, Clarksville</i>	Blues to Country – America's Music	35
Nov 11	AD	9	2,999	Roundtrip Nashville <i>Dover, Paducah, Clarksville, Nashville</i>	American Music Cruise	36
Nov 18	AD	9	2,699	Nashville to Chattanooga <i>Dover, Florence, Decatur</i>	Thanksgiving on the Cumberland	37
Nov 25	AD	9	2,699	Chattanooga to Nashville <i>Decatur, Savannah, Paducah, Dover</i>	Civil War	38
Dec 03	AD	8*	2,699	Roundtrip Nashville <i>Dover, Paducah, Clarksville, Nashville</i>	American Music Cruise	36
Dec 10	AD	8*	2,699	Nashville to Memphis <i>Nashville, Clarksville, Paducah, New Madrid</i>	American Music Cruise	39

*No Pre-Cruise Hotel Night

AMERICAN QUEEN

Voyage Date	Vessel	Total Days	Fares From	Itinerary	Theme	Page
Jul 01	AQ	9	1,999	Memphis to Louisville <i>Paducah, Brandenburg, Madison, Louisville</i>	Bourbon	32
Jul 08	AQ	9	1,999	Louisville to Pittsburgh <i>Madison, Cincinnati, Maysville, Point Pleasant, Marietta, Wheeling</i>	Return to Pittsburgh	33
Jul 15	AQ	9	1,999	Pittsburgh to Louisville <i>Wheeling, Marietta, Huntington, Augusta, Cincinnati, Madison</i>	Big Band	33
Jul 22	AQ	9	1,999	Louisville to Alton (St. Louis) <i>Brandenburg, Henderson, Paducah, Cape Girardeau, Chester</i>	American Culinary Experience	34



American Queen in Brandenburg, KY

MEMPHIS TO LOUISVILLE

Aboard the All-Suite American Duchess



9-DAY VOYAGE

PERFECT FOR ANY TRAVELER, THIS IDYLIC JOURNEY ALLOWS YOU TO EXPERIENCE BOTH THE MISSISSIPPI AND OHIO RIVERS AND SHOWCASES THE BEST OF AMERICA - FROM FRIENDLY PEOPLE AND BEAUTIFUL SCENERY TO IMPRESSIVE CITYSCAPES.

Day 1: Memphis, TN

Your journey begins with a boutique hotel stay in downtown Memphis.

Day 2: Memphis, TN

Depart 5:00 p.m.

Explore Memphis at your leisure or consider a Pre-Cruise Premium Shore Excursion with afternoon transfer to the *American Duchess*.

Day 3: River Cruising

Whether functional, artistic or a palate for storytelling, quilting has been a prominent craft in America. Delve further into this nationally treasured art form through a series of quilting lectures and classes during your leisurely day on the river.

Day 4: Paducah, KY

Observe elegant displays at the National Quilt Museum highlighting the colorful rebirth of quilt making and explore the Lowertown Arts District.

Day 5: Owensboro, KY

From the Western Kentucky Botanical Garden to the International Bluegrass Music Museum, this hidden gem nestled on a scenic bend of the Ohio River offers much to explore.

Day 6: Brandenburg, KY

Discover a wealth of history as you journey through the scenic rolling hills and unique river topography of Brandenburg towards Fort Knox, where you will tour the General George Patton Museum of Leadership.

Day 7: Madison, IN

Culture and heritage are woven into nearly every stop, ensuring you a glimpse of the beauty and history of antique machinery at the Schroeder Saddletree Factory, or in the Greek Revival architecture as you tour Lanier Mansion, the "Crown Jewel" of Madison's Historic District.

Day 8: Louisville, KY

Prepare for an interesting day as you set out on guided tours of iconic attractions throughout Louisville or indulge in a Premium Shore Excursion for a unique Kentucky experience.

Day 9: Louisville, KY

Disembark 8:00 a.m.

Enjoy Louisville at your leisure or consider a Post-Cruise Premium Shore Excursion with airport transfer.

THEME

The Art of Quilting

2018 AMERICAN DUCHESS VOYAGE DATE

SUITE CATEGORY	OS	LFS	DS	VS	IS
Apr 22	\$9,499	\$7,499	\$6,999	\$4,999	\$2,999

Fares are listed in U.S. dollars, per guest, double occupancy. Port Charges: \$179.

HIGHLIGHTS

- ★ Included pre-cruise boutique hotel stay
- ★ The largest accommodations on U.S. rivers
- ★ Open seating dining

NEW
2018

LOUISVILLE TO CINCINNATI

Aboard the All-Suite American Duchess



9-DAY VOYAGE

CELEBRATE THE KENTUCKY DERBY IN APPROPRIATE STYLE AS YOU GLIDE ALONG THE OHIO RIVER ABOARD THE LAVISH *AMERICAN DUCHESS* DISCOVERING AN ABUNDANCE OF WONDERFUL NEW SURPRISES AT EACH ENCHANTING PORT TOWN.

Day 1: Louisville, KY

Your journey begins with a boutique hotel stay in Louisville.

Day 2: Louisville, KY

Depart 5:00 p.m.

Explore Louisville at your leisure or consider a Pre-Cruise Premium Shore Excursion with afternoon transfer to the *American Duchess*.

Day 3: Madison, IN

Culture and heritage are weaved into nearly every stop, ensuring you a glimpse of the beauty and history of antique machinery at the Schroeder Saddletree Factory, or in the Greek Revival architecture as you tour Lanier Mansion, the "Crown Jewel" of Madison's Historic District.

Day 4: Louisville, KY

Prepare for an interesting day as you become a part of the Kentucky Derby Festival Great Steamboat Race® – one of the most iconic events of the festival.

Day 5: Brandenburg, KY

Discover Brandenburg's rich history on a journey through the scenic rolling hills and unique river topography of Brandenburg towards Fort Knox, where you will tour the General George Patton Museum of Leadership.

Day 6: Owensboro, KY

From the Western Kentucky Botanical Garden to the International Bluegrass Music Museum, this hidden gem is nestled on a scenic bend of the Ohio River.

Day 7: Louisville, KY

Today is the big day! Venture out into the city for a variety of local events, relax onboard and watch the race streaming live or ask about our optional Kentucky Derby ticket package (*tickets are not included in cruise fare*).

Day 8: River Cruising

Gaze at the beautiful landscapes as you mingle with fellow guests and exchange stories of the unique experiences that you have encountered on your journey along the Ohio River.

Day 9: Cincinnati, OH

Disembark 8:00 a.m.

Enjoy Cincinnati at your leisure or consider a Post-Cruise Premium Shore Excursion with airport transfer.

KENTUCKY DERBY TICKETS

Attend the Kentucky Derby with our Derby Day Premium Package. Call for details and pricing.

THEME

River Cruise

2018 AMERICAN DUCHESS VOYAGE DATE

SUITE CATEGORY	OS	LFS	DS	VS	IS
Apr 29 SOLD OUT	\$9,499	\$7,499	\$6,999	\$4,999	\$2,999

Derby tickets not included. Fares are listed in U.S. dollars, per guest, double occupancy. Port Charges: \$179.

HIGHLIGHTS

- ★ *Included pre-cruise boutique hotel stay*
- ★ *The largest accommodations on U.S. rivers*
- ★ *Open seating dining*



CINCINNATI TO MEMPHIS

Aboard the All-Suite American Duchess

9-DAY VOYAGE

EXPERIENCE THE HISTORY, CULTURE AND PASSION OF BOURBON MAKING FROM THE REGION'S PREMIER BOURBON EXPERTS ON THIS ENRICHING JOURNEY THROUGH AMERICA'S HEARTLAND AND INTO THE ROOTS OF KENTUCKY'S ABUNDANT BOURBON REGION.

Day 1: Cincinnati, OH

Your journey begins with a boutique hotel stay in Cincinnati. Venture out to the riverfront and gaze at the National Steamboat Monument which is the *American Queen's* original red paddlewheel.

Day 2: Cincinnati, OH

Depart 5:00 p.m.

Explore Cincinnati at your leisure or consider a Pre-Cruise Premium Shore Excursion with afternoon transfer to the *American Duchess*.

Day 3: Madison, IN

Journey to Frankfort, Kentucky for a complimentary guided tour of Buffalo Trace Distillery followed by samplings of their legendary bourbon.

Day 4: Louisville, KY

Set out on guided tours of iconic attractions throughout Louisville and choose your preferred complimentary distillery tour.

Day 5: Brandenburg, KY

Discover Brandenburg's rich history on a journey through the scenic rolling hills, manicured farmlands, and unique river topography of Brandenburg on your way to the distillery tour of your choice.

Day 6: River Cruising

Attend special bourbon presentations and tastings from the Kentucky region's leading distillers to learn what makes this American spirit different from other whiskeys and

explore the history and tradition that have flavored life in the Bluegrass state since the days of Thomas Jefferson.

Day 7: Paducah, KY

Observe elegant displays at the National Quilt Museum highlighting the colorful rebirth of quilt making and explore the Lowertown Arts District.

Day 8: New Madrid, MO

Take a guided tour of the New Madrid Historical Museum, which shares the history of this river town from the Mississippian period through the 20th century.

Day 9: Memphis, TN

Disembark 8:00 a.m.

Enjoy Memphis at your leisure or consider a Post-Cruise Premium Shore Excursion with airport transfer.

THEME

Bourbon



2018 AMERICAN DUCHESS VOYAGE DATE

SUITE CATEGORY	OS	LFS	DS	VS	IS
May 06	\$9,499	\$7,499	\$6,999	\$4,999	\$2,999

Fares are listed in U.S. dollars, per guest, double occupancy. Port Charges: \$179.

HIGHLIGHTS

- ★ Included pre-cruise boutique hotel stay
- ★ The largest accommodations on U.S. rivers
- ★ Open seating dining

MEMPHIS TO LOUISVILLE

Aboard the Iconic American Queen



9-DAY VOYAGE

EXPERIENCE THE HISTORY, CULTURE AND PASSION OF BOURBON MAKING FROM THE REGION'S PREMIER BOURBON EXPERTS ON THIS ENRICHING JOURNEY THROUGH AMERICA'S HEARTLAND AND INTO THE ROOTS OF KENTUCKY'S ABUNDANT BOURBON REGION.

Day 1: Memphis, TN

Your journey begins with a deluxe hotel stay in Memphis. The evening is yours to venture out and explore the city's famed eateries, unique shops, and the lively arts and entertainment scene.

Day 2: Memphis, TN

Depart 5:00 p.m.

Explore Memphis at your leisure or consider a Pre-Cruise Premium Shore Excursion with afternoon transfer to the *American Queen*.

Day 3: River Cruising

Attend special bourbon presentations and tastings from the Kentucky region's leading distillers to learn what makes this American spirit different from other whiskeys

and explore the history and tradition that have flavored life in the Bluegrass State since the days of Thomas Jefferson.

Day 4: Paducah, KY

Observe elegant displays at the National Quilt Museum highlighting the colorful rebirth of quilt making and explore the Lowertown Arts District.

Day 5: River Cruising

Gain insight into our nation's history and cultural heritage conveyed by our onboard Riverlorian and participate in bourbon enrichment activities.

Day 6: Brandenburg, KY

Discover Brandenburg's rich history on a journey through the scenic rolling hills,

manicured farmlands, and unique river topography of Brandenburg on your way to the distillery tour of your choice.

Day 7: Madison, IN

Journey to Frankfort, Kentucky for a complimentary guided tour of Buffalo Trace Distillery followed by samplings of their legendary bourbon.

Day 8: Louisville, KY

Set out on guided tours of iconic attractions throughout Louisville and choose your preferred complimentary distillery tour.

Day 9: Louisville, KY

Disembark 8:00 a.m.

Enjoy Louisville at your leisure or consider a Post-Cruise Premium Shore Excursion with airport transfer.

THEME

Bourbon

2018 AMERICAN QUEEN VOYAGE DATE

CATEGORY	OS	LS	FS	AAA	AA	A	B	C	D	E	SO	SI
Jul 01	\$7,599	\$6,099	\$5,499	\$4,399	\$4,199	\$3,999	\$3,799	\$3,599	\$3,299	\$1,999	\$5,099	\$2,499

Fares are listed in U.S. dollars, per guest, double occupancy, with the exception of SI and SO categories. Port Charges: \$179.



LOUISVILLE TO PITTSBURGH & REVERSE

Aboard the Iconic American Queen

9-DAY VOYAGE

UNCOVER AMERICA'S BUCOLIC HEARTLAND AS YOU TRAVEL THE TRANQUIL WATERS OF THE OHIO RIVER FROM LOUISVILLE TO PITTSBURGH, THE ICONIC CITY WHERE NAMES LIKE CARNEGIE AND BESSEMER CREATED THE STEEL-MAKING CAPITAL OF THE WORLD.

Day 1: Louisville, KY

Your journey begins with a deluxe hotel stay in Louisville.

Day 2: Louisville, KY

Depart 6:00 p.m.

Explore Louisville at your leisure or consider a Pre-Cruise Premium Shore Excursion with afternoon transfer to the *American Queen*.

Day 3: Madison, IN

Culture and heritage are weaved into nearly every stop, ensuring you a glimpse of the beauty and history of antique machinery at the Schroeder Saddletree Factory, or in the Greek Revival architecture as you tour Lanier Mansion, the "Crown Jewel" of Madison's Historic District.

Day 4: Cincinnati, OH

Get acquainted with many of Cincinnati's best-known landmarks including Museum Center at Union Terminal, Music Hall and Bicentennial Commons.

Day 5: Maysville, KY

Boasting picturesque views of the Ohio River, charming Maysville is the gateway to Kentucky's Bluegrass Region Walk and was a key stop on the Underground Railroad. Enjoy award-winning theaters, local art galleries, museums and historical landmarks.

Day 6: Point Pleasant, WV

Visit Tu-Endie-Wei State Park, a four-acre site commemorating the October 1774 Battle of Point Pleasant.

Day 7: Marietta, OH

Explore Historic Harmar Village in addition to landmarks such as The Castle and a multitude of museums.

Day 8: Wheeling, WV

Discover the story of West Virginia's relationship with the Civil War at the historic West Virginia Independence Hall.

Day 9: Pittsburgh, PA

Disembark 8:00 a.m.

Enjoy Pittsburgh at your leisure or consider a Post-Cruise Premium Shore Excursion with airport transfer.

CRUISE ADD-ONS

See pages 12-13 for Premium Shore Excursions, Hotel Nights and Immersive City Stays.

THEME

*Jul 8: Return to Pittsburgh
Jul 15: Big Band*



2018 AMERICAN QUEEN VOYAGE DATES

CATEGORY	OS	LS	FS	AAA	AA	A	B	C	D	E	SO	SI
Jul 08, 15*	\$7,599	\$6,099	\$5,499	\$4,399	\$4,199	\$3,999	\$3,799	\$3,599	\$3,299	\$1,999	\$5,099	\$2,499

*Reverse itinerary varies slightly. Fares are listed in U.S. dollars, per guest, double occupancy, with the exception of SI and SO categories. Port Charges: \$179.

LOUISVILLE TO ALTON (ST. LOUIS)

Aboard the Iconic American Queen



9-DAY VOYAGE

YOU WILL BE INSTANTLY CAPTIVATED WITH THIS HISTORIC JOURNEY OF EXPLORATION ONCE YOU DISCOVER THE OLD FRENCH TRADING POST OF CAPE GIRARDEAU, THE CHARMING PORT OF PADUCAH AND THE COLORFUL POP-CULTURE ATMOSPHERE OF CHESTER.

Day 1: Louisville, KY

Your journey begins with a deluxe hotel stay in Louisville. The evening is yours to venture out and explore the city's famed eateries, and the lively arts and entertainment scene.

Day 2: Louisville, KY

Depart 5:00 p.m.

Explore Louisville at your leisure or consider a Pre-Cruise Premium Shore Excursion with afternoon transfer to the *American Queen*.

Day 3: Brandenburg, KY

Discover Brandenburg's rich history on a journey through the scenic rolling hills, manicured farmlands, and unique river topography of Brandenburg towards Fort Knox, where you will tour the General George Patton

Museum of Leadership.

Day 4: Henderson, KY

Located in picturesque John James Audubon State Park and listed on the National Register of Historic Places, the John James Audubon Museum offers you an opportunity to explore original oil and watercolor art by Audubon, as well as personal memorabilia and a "Birds of Prey" program presented by the park naturalist.

Day 5: Paducah, KY

Observe elegant displays at the National Quilt Museum highlighting the colorful rebirth of quilt making and explore the Lowertown Arts District.

Day 6: Cape Girardeau, MO

Stroll along the riverfront and discover what led Mark Twain

to write so eloquently about Cape Girardeau in *Life on the Mississippi*, the inspiration that General Ulysses S. Grant used to lead with firm conviction as he took command of the Union Army on the Mississippi in historic downtown.

Day 7: Chester, IL

Affectionately referred to as the "Home of Popeye," this colorful city will enchant you with its fun pop-culture atmosphere and charming Popeye Character Trail.

Day 8: River Cruising

Relax on deck with a pair of binoculars to scout the riverbanks for wildlife as you mingle with fellow guests during a leisurely day onboard.

Day 9: Alton, IL

Disembark 8:00 a.m.

Enjoy nearby St. Louis at your leisure or consider a Post-Cruise Premium Shore Excursion with airport transfer.

THEME:

American Culinary Experience

2018 AMERICAN QUEEN VOYAGE DATE

CATEGORY	OS	LS	FS	AAA	AA	A	B	C	D	E	SO	SI
Jul 22	\$7,599	\$6,099	\$5,499	\$4,399	\$4,199	\$3,999	\$3,799	\$3,599	\$3,299	\$1,999	\$5,099	\$2,499

Fares are listed in U.S. dollars, per guest, double occupancy, with the exception of SI and SO categories. Port Charges: \$179.

MEMPHIS TO NASHVILLE

Aboard the All-Suite American Duchess

9-DAY VOYAGE

ENJOY NATURE'S HANDIWORK AS THE LEAVES DISPLAY A MYRIAD OF COLORS ON THIS MUSIC-FILLED JOURNEY FROM THE BLUES JOINTS OF BEALE STREET TO THE TENNESSEE HILLS SURROUNDING NASHVILLE.

Day 1: Memphis, TN

Your journey begins with a boutique hotel stay in downtown Memphis. The evening is yours to venture out and explore the city's famed eateries, unique shops, and the lively arts and entertainment scene.

Day 2: Memphis, TN

Depart 5:00 p.m.

Explore Memphis at your leisure or consider a Pre-Cruise Premium Shore Excursion with afternoon transfer to the *American Duchess*.

Day 3: Ashport Landing, TN

Learn about the historic and archaeological significance of Fort Pillow on an in-depth tour of the grounds and reconstructed inner fort.

Day 4: New Madrid, MO

Take a guided tour of the New Madrid Historical Museum, which shares the history of this river town from the Mississippian period through the 20th century.

Day 5: Paducah, KY

Observe elegant displays at the National Quilt Museum highlighting the colorful rebirth of quilt making and explore the Lowertown Arts District.

Day 6: Dover, TN

Tour Fort Donelson, the battlefield where Union and Confederate soldiers fought in February of 1862.

Day 7: Clarksville, TN

Delve deep into the local history at the Customs House Museum and Cultural

Center. Built in 1898, this architecturally fascinating structure is among the most photographed buildings in the region and features rotating exhibits, galleries and a sculpture garden.

Day 8: River Cruising

Gaze at the beautiful landscapes and small river towns as you mingle with fellow guests and discuss the unique aspects of river life on your way to Music City.

Day 9: Nashville, TN

Disembark 8:00 a.m.

Enjoy Nashville at your leisure or consider a Post-Cruise Premium Shore Excursion with airport transfer.

ADD A CITY STAY

See pages 12-13 for Premium Shore Excursions, Hotel Nights and Immersive City Stays.

THEME:

Blues to Country – America's Music



2018 AMERICAN DUCHESS VOYAGE DATE

SUITE CATEGORY

Nov 04

OS

\$9,499

LFS

\$7,499

DS

\$6,999

VS

\$4,999

IS

\$2,999

Fares are listed in U.S. dollars, per guest, double occupancy. Port Charges: \$179.

HIGHLIGHTS

- ★ *Included pre-cruise boutique hotel stay*
- ★ *The largest accommodations on U.S. rivers*
- ★ *Open seating dining*

ROUNDTrip NASHVILLE

Aboard the All-Suite American Duchess



9-DAY VOYAGE

EMBARK ON A CASUAL COUNTRY CRUISE FROM MUSIC CITY, HOME OF THE GRAND OLE OPRY AND HISTORIC RYMAN AUDITORIUM, AND DELVE DEEP INTO THE RICH HISTORY AND SINCERE HOSPITALITY OF THE REGION THAT SPAWNED COUNTRY MUSIC.

Day 1: Nashville, TN

Your journey begins with a boutique hotel stay in Nashville. Take the evening to explore the Music City's famed attractions at your leisure.

Day 2: Nashville, TN

Depart 5:00 p.m.

Explore Nashville at your leisure or consider a Pre-Cruise Premium Shore Excursion with afternoon transfer to the *American Duchess*.

Day 3: River Cruising

Retreat to The Lincoln Library adorned with ornate bookcases stocked with an imaginative selection, take hold of a literary classic, curl up on a plush chair in a cozy corner and relish every moment of serenity.

Day 4: Dover, TN

Tour Fort Donelson, the battlefield where Union and Confederate soldiers fought in February of 1862.

Day 5: Paducah, KY

Observe elegant displays at the National Quilt Museum highlighting the colorful rebirth of quilt making and explore the Lowertown Arts District.

Day 6: Clarksville, TN

Delve deep into the local history at the Customs House Museum and Cultural Center. Built in 1898, this architecturally fascinating structure is among the most photographed buildings in the region and features rotating

exhibits, galleries and a sculpture garden.

Day 7: River Cruising

Gaze at the beautiful landscapes and small river towns as you mingle with fellow guests and discuss the unique aspects of river life on your way to Music City.

Day 8: Nashville, TN

Get ready to experience the heartbeat of Nashville as we take you to the legendary Grand Ole Opry for a stellar evening of live music.

Day 9: Nashville, TN

Disembark 8:00 a.m.

Enjoy Nashville at your leisure or consider a Post-Cruise Premium Shore Excursion with airport transfer.

THEME:

American Music Cruise

2018 AMERICAN DUCHESS VOYAGE DATES

SUITE CATEGORY	OS	LFS	DS	VS	IS
Nov 11	\$9,499	\$7,499	\$6,999	\$4,999	\$2,999
Dec 03*	\$8,499	\$6,699	\$6,299	\$4,499	\$2,699

*8 days; No pre-cruise hotel night. Fares are listed in U.S. dollars, per guest, double occupancy. Port Charges: \$159-179.

HIGHLIGHTS

- ★ *Included pre-cruise boutique hotel stay*
- ★ *The largest accommodations on U.S. rivers*
- ★ *Open seating and specialty dining venues*



NASHVILLE TO CHATTANOOGA

Aboard the All-Suite American Duchess

9-DAY VOYAGE

CELEBRATE THANKSGIVING AND THE SPLENDOR OF AUTUMN WITH A SPECIAL HOLIDAY VOYAGE CRUISING PAST THE VIBRANT COLORS OF THE LAND ALONG THE WATERS OF THE CUMBERLAND RIVER.

Day 1: Nashville, TN

Your journey begins with a boutique hotel stay in Nashville. The evening is yours to venture out and explore the city's famed eateries, unique shops, and the lively arts and entertainment scene.

Day 2: Nashville, TN

Depart 5:00 p.m.

Explore Nashville at your leisure or consider a Pre-Cruise Premium Shore Excursion with afternoon transfer to the *American Duchess*.

Day 3: River Cruising

There is always plenty to do between dawn and dusk on the river and today is the perfect day to enjoy the many public spaces and activities that are available to you.

Day 4: Dover, TN

Tour Fort Donelson, the battlefield where Union and Confederate soldiers fought in February of 1862. Discover the history of the past commemorated on the battlefield where monuments, plaques and cannons pay tribute to the battle that ultimately ended with the Union forces capturing Fort Donelson.

Day 5: River Cruising

Thumb through the *River Times* to choose from a variety of holiday-related enrichment activities that appeal to you during this fabulous day on the river.

Day 6: Florence, AL

Visit Pope's Tavern Museum, formerly a stagecoach stop, tavern, inn and hospital for both Confederate and Union forces during the

Civil War. The unique Tavern Museum beautifully displays the cultural history of this vibrant river town.

Day 7: Decatur, AL

Originally a river crossing for settlers west of the Appalachian Mountains, this charming Tennessee River town boasts a rich and colorful history that you will discover in places like the Blue and Gray Museum, which is believed to hold one of the largest private collections of Civil War era relics.

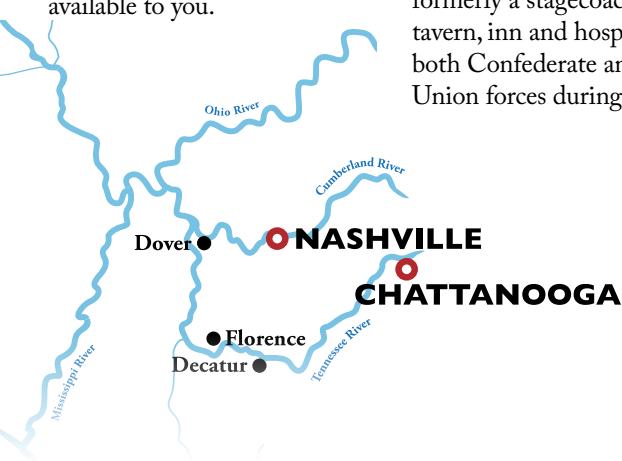
Day 8: River Cruising

Gaze at the beautiful landscapes as you mingle with fellow guests and exchange stories of the unique experiences that you have encountered on your journey.

Day 9: Chattanooga, TN

Disembark 8:00 a.m.

Enjoy Chattanooga at your leisure or consider a Post-Cruise Premium Shore Excursion with airport transfer.



THEME:

Thanksgiving on the Cumberland



2018 AMERICAN DUCHESS VOYAGE DATE

SUITE CATEGORY	OS	LFS	DS	VS	IS
Nov 18	\$8,499	\$6,699	\$6,299	\$4,499	\$2,699

Fares are listed in U.S. dollars, per guest, double occupancy. Port Charges: \$179.

HIGHLIGHTS

- ★ *Included pre-cruise boutique hotel stay*
- ★ *The largest accommodations on U.S. rivers*
- ★ *Open seating and specialty dining venues*



CHATTANOOGA TO NASHVILLE

Aboard the All-Suite American Duchess



9-DAY VOYAGE

A BREATHTAKING PANORAMA FROM THE CLIFFS OF CHATTANOOGA'S LOOKOUT MOUNTAIN SETS THE TONE FOR THIS UNRIVALED JOURNEY THROUGH PORTS OF CALL THAT PLAYED A PART IN THE CONFLICT WHICH TORE A NATION APART.

Day 1: Chattanooga, TN

Your journey begins with a boutique hotel stay in Chattanooga.

Day 2: Chattanooga, TN

Depart 5:00 p.m.

Explore Chattanooga at your leisure or consider a Pre-Cruise Premium Shore Excursion with afternoon transfer to the *American Duchess*.

Day 3: River Cruising

Join our resident Riverlorian or special onboard guest speaker for astounding Civil War presentations and discussions.

Day 4: Decatur, AL

Originally a river crossing for settlers west of the Appalachian Mountains, this charming Tennessee River town boasts a

rich and colorful history that you will discover in places like the Blue and Gray Museum, which is believed to hold one of the largest private collections of Civil War era relics.

Day 5: Savannah, TN

Enter the beautiful Cherry Mansion for a tour of this private residence which was used as General Ulysses S. Grant's headquarters during the Battle of Shiloh or explore Shiloh National Military Park on an optional Premium Shore Excursion.

Day 6: Paducah, KY

Prepare to be amazed at the influence Paducah had on the outcome of the Civil War. Generals Ulysses S. Grant, Nathan Bedford Forrest and

others made their astounding contributions to history here and you will listen to this untold story inside the 1852 Greek revival home of Confederate General Lloyd Tilghman.

Day 7: Dover, TN

Tour Fort Donelson, the battlefield where Union and Confederate soldiers fought in February of 1862.

Day 8: River Cruising

Today is your final day onboard which makes it the perfect day to enjoy the many public spaces and Civil War themed enrichment activities that are available to you.

Day 9: Nashville, TN

Disembark 8:00 a.m.

Enjoy Nashville at your leisure or consider a Post-Cruise Premium Shore Excursion with airport transfer.

THEME:
Civil War

2018 AMERICAN DUCHESS VOYAGE DATE

SUITE CATEGORY	OS	LFS	DS	VS	IS
Nov 25	\$8,499	\$6,699	\$6,299	\$4,499	\$2,699

Fares are listed in U.S. dollars, per guest, double occupancy. Port Charges: \$179.

HIGHLIGHTS

- ★ *Included pre-cruise boutique hotel stay*
- ★ *The largest accommodations on U.S. rivers*
- ★ *Open seating and specialty dining venues*

NASHVILLE TO MEMPHIS

Aboard the All-Suite American Duchess

8-DAY VOYAGE

DISCOVER THE SIGHTS AND SOUNDS OF AMERICA'S RIVERS AND THE ROOTS FROM WHICH SPRANG A VARIETY OF MUSICAL GENRES. AS YOU JOURNEY FROM NASHVILLE TO MEMPHIS, ENJOY SPECIAL ENTERTAINMENT AND FOCUSED LECTURES THAT MELD AND HARMONIZE WITH THE RHYTHMS OF THE RIVER.

Day 1: Nashville, TN

Board the *American Duchess* in Music City and prepare for an exciting evening onboard as you settle in for your magnificent journey. Enjoy a fabulous dinner and then rest well for a full-day adventure in Nashville tomorrow.

Day 2: Nashville, TN

Enjoy a guided city tour of Nashville before we take you to the legendary Grand Ole Opry for a stellar evening of live music.

Day 3: River Cruising

Depart 6:00 a.m.

Awake to a beautiful morning cruising past the scenic riverbanks lining the Cumberland River as you relax in your suite and order room

service for a peaceful start to a fabulous day.

Day 4: Clarksville, TN

Delve deep into local history at the Customs House Museum and Cultural Center. Built in 1898, this architecturally fascinating structure is among the most photographed buildings in the region and features rotating exhibits, galleries and a sculpture garden.

Day 5: Paducah, KY

Observe elegant displays at the National Quilt Museum highlighting the colorful rebirth of quilt making and explore the Lowertown Arts District.

Day 6: New Madrid, MO

Take a guided tour of the New Madrid Historical Museum,

which shares the history of this river town from the Mississippian period through the 20th century.

Day 7: River Cruising

Today is your final day onboard which makes it the perfect day to mingle with fellow guests and exchange stories of the unique experiences that you have encountered on your journey.

Day 8: Memphis, TN

Disembark 8:00 a.m.

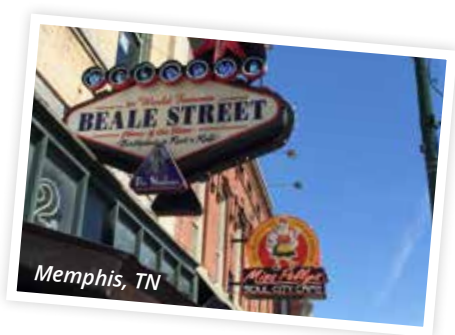
Enjoy Memphis at your leisure or consider a Post-Cruise Premium Shore Excursion with airport transfer.

ADD A CITY STAY

Did you know that music is the heart and soul of Memphis? Our immersive 3-day/2-night city stay package affords you the opportunity to enhance your American Music river cruise. See page 13 or call for details.

THEME:

American Music Cruise



2018 AMERICAN DUCHESS VOYAGE DATE

SUITE CATEGORY	OS	LFS	DS	VS	IS
Dec 10	\$8,499	\$6,699	\$6,299	\$4,499	\$2,699

No pre-cruise hotel night. Fares are listed in U.S. dollars, per guest, double occupancy. Port Charges: \$159.

HIGHLIGHTS

- ★ *The first loft suites*
- ★ *The largest accommodations on U.S. rivers*
- ★ *Open seating and specialty dining venues*

MINNEAPOLIS

Red Wing ●

Winona ●

La Crosse ●

Prairie du Chien ●

Dubuque ●

Clinton ●

Bettendorf (Quad Cities) ●

Burlington ●

Nauvoo ●

Hannibal ●

ST. LOUIS

Alton ●

Chester ●

Cape Girardeau ●

New Madrid ●

Ashport Landing ●

MEMPHIS

CHICAGO

Ottawa ●

Peoria ●

Havana ●

Ohio River

Cumberland River

Tennessee River

Mississippi River

Illinois River

Missouri River

Mississippi River



THE UPPER MISSISSIPPI & ILLINOIS RIVERS

TREASURES OF SUMMER AND COLORS OF AUTUMN

The upper reaches of the Mississippi River from dynamic St. Louis to beautiful Red Wing and St. Paul are rich with frontier tales of fur traders and pioneers set among picturesque geography and abundant wildlife. As you cruise along the Illinois River from the artistic and architectural splendors of Chicago, hidden gems around each bend fuel your sense of discovery as the very best of America's heartland unfolds before you.

St. Louis was the hub for riverboats traveling along the Mississippi and the jumping-off point for exploration and settlement of the West. Today, that heritage is reflected in the shining stainless steel Gateway Arch that curves above the skyline and in the Jefferson National Expansion Memorial that lies beneath.

Perhaps no person defined America's view of its greatest river more than Mark Twain. Tom Sawyer, Huck Finn and Becky Thatcher are alive and well in Hannibal, Missouri, Samuel Clemens' boyhood home. In Cape Girardeau, an enormous mural immortalizes 275 years of local progress, wars and achievements.

Bettendorf, Iowa is the starting point of Quad Cities exploration where you will uncover the intriguing evolution of five individual, yet unified, communities. Experience Old Nauvoo, a peaceful place of beauty along the Mississippi River, founded by early members of today's Mormon community. As one of our nation's premier historic communities with over 30 beautiful sites dating back to the 1839-1846 time period, there is an abundance of history just waiting to be shared with visitors.

In Wisconsin and Minnesota, wildlife takes center stage. View an impressive population of bald eagles on an eco cruise from Red Wing or at the National Eagle Center in nearby Wabasha. Let the seasons guide your travels as the fragrant flowerboxes of summer give way to the autumnal colors of fall.



2018 VOYAGE CALENDAR SUMMARY

The Upper Mississippi and Illinois Rivers

AMERICAN QUEEN

Voyage Date	Vessel	Total Days	Fares From	Itinerary	Theme	Page
Jul 29	AQ	9	1,999	Alton (St. Louis) to Red Wing (Minneapolis) <i>Hannibal, Clinton, Dubuque, La Crosse, Red Wing</i>	Life on the Mississippi	43
Aug 05	AQ	16	3,599	Red Wing (Minneapolis) to New Orleans <i>See page 2 for the theme overview. For complete day-by-day itinerary, visit us online.</i>	<i>The Mighty Mississippi</i>	 2
Sep 09	AQ	9	1,999	Roundtrip Red Wing (Minneapolis) <i>Dubuque, Prairie du Chien, La Crosse, Winona, Red Wing</i>	Heartland Heritage	47
Sep 16	AQ	9	1,999	Red Wing (Minneapolis) to Alton (St. Louis) <i>Red Wing, La Crosse, Dubuque, Bettendorf, Burlington, Hannibal</i>	Mark Twain	48
Sep 23	AQ	9	1,999	Alton (St. Louis) to Memphis <i>Chester, Cape Girardeau, Paducah, Dover, New Madrid, Ashport Landing</i>	The 50s and 60s Remembered	49

AMERICAN DUCHESS

Aug 05	AD	9	2,799	Red Wing (Minneapolis) to St. Louis <i>Red Wing, Winona, Bettendorf, Nauvoo, Hannibal</i>	The Art of the Mississippi	44
Aug 12	AD	9	2,799	St. Louis to Ottawa (Chicago) <i>Alton, Hannibal, Havana, Peoria, Ottawa</i>	Lincoln's Illinois	45
Aug 19	AD	9	2,799	Ottawa (Chicago) to St. Louis <i>Ottawa, Peoria, Havana, Hannibal, Alton</i>	America's Heartland	45
Aug 26	AD	9	2,799	St. Louis to Red Wing (Minneapolis) <i>Hannibal, Clinton, Prairie du Chien, Winona, Red Wing</i>	America's Heartland	46
Sep 02	AD	16	4,999	Red Wing (Minneapolis) to New Orleans <i>See page 2 for the theme overview. For complete day-by-day itinerary, visit us online.</i>	<i>The Mighty Mississippi</i>	 2



American Duchess in Natchez, MS

ALTON (ST. LOUIS) TO RED WING (MINNEAPOLIS)

Aboard the Iconic American Queen

9-DAY VOYAGE

ENJOY LIFE ON THE MISSISSIPPI RIVER AS YOU SET OFF ON A VACATION STEEPED IN THE HISTORY, CULTURE AND HOMESPUN TRADITIONS THAT MADE AMERICA GREAT.

Day 1: St. Louis, MO

Your journey begins with a deluxe hotel stay in St. Louis. The evening is yours to explore the Gateway City, take in the rich culture, diverse arts scene and local attractions such as the Gateway Arch.

Day 2: Alton, IL

Depart 5:00 p.m.

Explore St. Louis at your leisure or consider a Pre-Cruise Premium Shore Excursion with afternoon transfer to the *American Queen*.

Day 3: Hannibal, MO

You will be enchanted by Mark Twain's quaint hometown as you explore the sites that inspired his beloved American classics and learn everything there is to know about this literary icon.

Day 4: River Cruising

Gaze at the beautiful landscapes as you mingle with fellow guests and exchange stories of the unique experiences that you encountered during your visit to Mark Twain's hometown of Hannibal.

Day 5: Clinton, IA

Behold one of the most picturesque riverfronts

on the Mississippi as you stroll through this charming little town steeped in history and tour significant attractions such as the Dutch Windmill, one of only two working Dutch windmills left in the United States!



Day 6: Dubuque, IA

Experience this town's unique flavor and enjoy views of the Mississippi River and downtown Dubuque on the Fenelon Place Elevator, constructed in 1882 and described as the world's shortest, steepest scenic railway.

Day 7: La Crosse, WI

Admire the bronze statues, symbolic paintings, stained glass windows and striking mosaics in the Chapel of St. Rose before taking a stroll along the inviting Riverwalk and through Riverside International Friendship Garden.

Day 8: Red Wing, MN

Learn about one of Red Wing's most historic trades, pottery, with a visit to the Pottery Museum of Red Wing, pick up a souvenir in the Bush & Main Street shopping district and then tour the historic St. James Hotel.

Day 9: Red Wing, MN

Disembark 8:00 a.m.

Enjoy nearby Minneapolis at your leisure or consider a Post-Cruise Premium Shore Excursion with airport transfer.

CRUISE ADD-ONS

See pages 12-13 for Premium Shore Excursions, Hotel Nights and Immersive City Stays.

THEME

Life on the Mississippi

2018 AMERICAN QUEEN VOYAGE DATE

CATEGORY	OS	LS	FS	AAA	AA	A	B	C	D	E	SO	SI
Jul 29	\$7,599	\$6,099	\$5,499	\$4,399	\$4,199	\$3,999	\$3,799	\$3,599	\$3,299	\$1,999	\$5,099	\$2,499

Fares are listed in U.S. dollars, per guest, double occupancy, with the exception of SI and SO categories. Port Charges: \$179.

RED WING (MINNEAPOLIS) TO ST. LOUIS

Aboard the All-Suite American Duchess

9-DAY VOYAGE

MARK TWAIN'S VISION OF THE MISSISSIPPI RIVER HOLDS TRUE ON THIS TIMELESS VOYAGE FROM THE SCENIC BLUFFS OF RED WING TO ST. LOUIS' BUSTLING UNION STATION MARKETPLACE.

Day 1: Minneapolis, MN

Your journey begins with a boutique hotel stay in Minneapolis. The evening is yours to get acquainted with this culturally diverse city.

Day 2: Red Wing, MN

Explore nearby Minneapolis at your leisure or consider a Pre-Cruise Premium Shore Excursion with afternoon transfer to the *American Duchess* in Red Wing.

Day 3: Red Wing, MN

Depart 5:00 p.m.

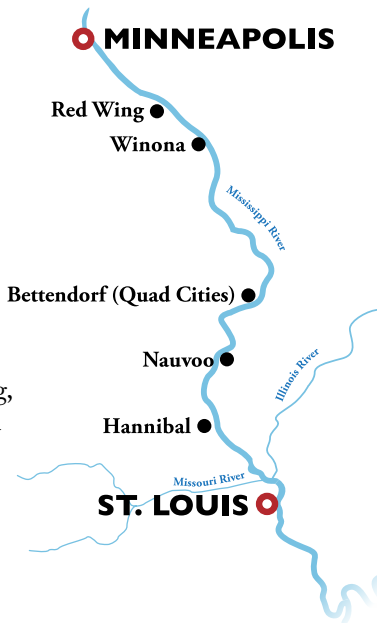
Learn about one of Red Wing's most historic trades, pottery, with a visit to the Pottery Museum of Red Wing, pick up a souvenir in the Bush & Main Street shopping district and then tour the historic St. James Hotel.

Day 4: Winona, MN

From its sculpted bluffs to its mighty river and all places in between, this charming port town holds unparalleled beauty mixed with a cool urbanity and old-world charm that will surely captivate you.

Day 5: River Cruising

Gaze at the beautiful landscapes and small river towns as you mingle with fellow guests and discuss the unique aspects of river life.



Day 6: Bettendorf, IA (Quad Cities)

Explore the lively Quad Cities area in the Village of East Davenport and Quad City Botanicals Center or enjoy interactive exhibits at the John Deere Pavilion with The John Deere Experience Premium Shore Excursion.

Day 7: Nauvoo, IL

Discover this quaint little city and its unique history that has been well-preserved through sweeping restoration projects.

Day 8: Hannibal, MO

You will be enchanted by Mark Twain's quaint hometown as you explore the sites that inspired his beloved American classics and learn everything there is to know about this literary icon.

Day 9: St. Louis, MO

Disembark 8:00 a.m.
Enjoy St. Louis at your leisure or consider a Post-Cruise Premium Shore Excursion with airport transfer.

CRUISE ADD-ONS

See pages 12-13 for Premium Shore Excursions, Hotel Nights and Immersive City Stays.

THEME

The Art of the Mississippi

2018 AMERICAN DUCHESS VOYAGE DATE

SUITE CATEGORY	OS	LFS	DS	VS	IS
Aug 05	\$8,999	\$7,099	\$6,599	\$4,699	\$2,799

Fares are listed in U.S. dollars, per guest, double occupancy. Port Charges: \$179.

HIGHLIGHTS

- ★ *Included pre-cruise boutique hotel stay*
- ★ *The largest accommodations on U.S. rivers*
- ★ *Open seating dining*

ST. LOUIS TO OTTAWA (CHICAGO) & REVERSE

Aboard the All-Suite American Duchess



9-DAY VOYAGE

SET OFF ON AN EXTRAORDINARY JOURNEY FROM THE ARCHITECTURAL SPLENDOR OF THE FAMED GATEWAY ARCH IN ST. LOUIS TO THE SOARING SKYLINE AND SOPHISTICATED ARTISTRY OF CHICAGO.

Day 1: St. Louis, MO

Your journey begins with a boutique hotel stay in St. Louis. The evening is yours to explore the Gateway City, take in the rich culture, diverse arts scene and local attractions such as the Gateway Arch.

Day 2: St. Louis, MO

Depart 5:00 p.m.

Explore St. Louis at your leisure or consider a Pre-Cruise Premium Shore Excursion with afternoon transfer to the *American Duchess*.

Day 3: Alton, IL

View an ever-changing variety of songbirds and waterfowl at the Audubon Center at Riverlands. This unique attraction connects people to the beauty and significance of the Mississippi River.

Day 4: Hannibal, MO

You will be enchanted by Mark Twain's quaint hometown as you explore the sites that inspired his beloved American classics and learn everything there is to know about this literary icon.

Day 5: River Cruising

Retreat to The Lincoln Library adorned with ornate bookcases stocked with an imaginative selection, take hold of a literary classic, curl up on a plush chair in a cozy corner and relish every moment of serenity.

Day 6: Havana, IL

Nature lovers and history buffs will relish the day touring this beautiful, scenic port.

Day 7: Peoria, IL

Take in the beauty of Peoria's riverfront and enjoy visiting noteworthy places in the downtown area like the Peoria Riverfront Museum and Renaissance Park.

Day 8: Ottawa, IL

Uncover the fascinating past of this port town in places such as the historic Reddick Mansion, I&M Canal Toll House, and the Ottawa Historical and Scouting Heritage Museum.

Day 9: Ottawa, IL

Disembark 8:00 a.m.

Enjoy nearby Chicago at your leisure or consider a Post-Cruise Premium Shore Excursion with airport transfer.

ADD A CITY STAY

Immersive 3-day/2-night package available. See page 13 or call for details.

THEMES:

*Aug 12: Lincoln's Illinois
Aug 19: America's Heartland*

2018 AMERICAN DUCHESS VOYAGE DATES

SUITE CATEGORY	OS	LFS	DS	VS	IS
Aug 12	\$8,999	\$7,099	\$6,599	\$4,699	\$2,799
Aug 19*	\$8,999	\$7,099	\$6,599	\$4,699	\$2,799

*Reverse Itinerary. Fares are listed in U.S. dollars, per guest, double occupancy. Port Charges: \$179.

HIGHLIGHTS

- ★ *Included pre-cruise boutique hotel stay*
- ★ *The largest accommodations on U.S. rivers*
- ★ *Open seating dining*



ST. LOUIS TO RED WING (MINNEAPOLIS)

Aboard the All-Suite American Duchess

9-DAY VOYAGE

THERE'S NO BETTER PLACE TO BEGIN A JOURNEY THROUGH AMERICA'S HEARTLAND THAN LIVELY ST. LOUIS, THE GATEWAY CITY. FROM ITS FOUNDING IN 1764 TO THE 1904 WORLD'S FAIR, THIS BEAUTIFUL CITY HAS AN ABUNDANCE OF INTRIGUING HISTORY TO EXPLORE. DON'T MISS THIS INCREDIBLE VOYAGE FULL OF SURPRISES THAT WILL UNDOUBTEDLY LEAVE A LASTING IMPRESSION.

Day 1: St. Louis, MO

Your journey begins with a boutique hotel stay in St. Louis. The evening is yours to explore the Gateway City, take in the rich culture, diverse arts scene and local attractions such as the Gateway Arch.

Day 2: St. Louis, MO

Depart 5:00 p.m.

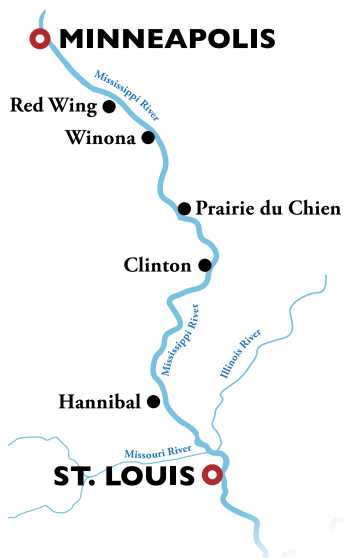
Explore St. Louis at your leisure or consider a Pre-Cruise Premium Shore Excursion with afternoon transfer to the *American Duchess*.

Day 3: Hannibal, MO

You will be enchanted by Mark Twain's quaint hometown as you explore the sites that inspired his beloved American Classics and learn everything there is to know about this literary icon.

Day 4: River Cruising

Gaze at the beautiful landscapes as you mingle with fellow guests and exchange stories of the unique experiences that you encountered during your visit to Mark Twain's hometown of Hannibal.



Day 5: Clinton, IA

Behold one of the most picturesque riverfronts on the Mississippi as you stroll through this charming little town steeped in history and tour significant attractions

such as the Dutch Windmill, one of only two working Dutch windmills left in the United States!

Day 6: Prairie du Chien, WI

Discover the rich history lining the streets of this notable city as you tour symbolic attractions like Villa Louis Residence and Grounds, a lovely Victorian estate dating back to the 1840's.

Day 7: Winona, MN

From its sculpted bluffs to its mighty river and all places in between, this charming port town holds unparalleled

beauty mixed with a cool urbanity and old-world charm that will surely captivate you.

Day 8: Red Wing, MN

Learn about one of Red Wing's most historic trades, pottery, with a visit to the Pottery Museum of Red Wing and then tour the historic St. James Hotel.

Day 9: Red Wing, MN

Disembark 8:00 a.m.

Enjoy nearby Minneapolis at your leisure or consider a Post-Cruise Premium Shore Excursion with airport transfer.

THEME:

America's Heartland

2018 AMERICAN DUCHESS VOYAGE DATE

SUITE CATEGORY	OS	LFS	DS	VS	IS
Aug 26	\$8,999	\$7,099	\$6,599	\$4,699	\$2,799

Fares are listed in U.S. dollars, per guest, double occupancy. Port Charges: \$179.

HIGHLIGHTS

- ★ Included pre-cruise boutique hotel stay
- ★ The largest accommodations on U.S. rivers
- ★ Open seating dining

ROUNDTRIP RED WING (MINNEAPOLIS)

Aboard the Iconic American Queen



9-DAY VOYAGE

CELEBRATE THE REMAINING DAYS OF SUMMER WITH A JOURNEY TO THE HISTORIC TOWNS AND CITIES IN THE HEART OF AMERICA THAT SERVED TO DEFINE THE CLASSIC TRADITIONS THAT WE ALL HOLD SO DEAR.

Day 1: Minneapolis, MN

Your journey begins with a deluxe hotel stay in Minneapolis. The evening is yours to get acquainted with this culturally diverse city.

Day 2: Red Wing, MN

Depart 5:00 p.m.

Explore nearby Minneapolis at your leisure or consider a Pre-Cruise Premium Shore Excursion with afternoon transfer to the *American Queen*.

Day 3: River Cruising

Relax on deck with a pair of binoculars to scout the riverbanks for wildlife as you mingle with fellow guests during a leisurely day onboard.

Day 4: Dubuque, IA

Experience this town's unique flavor and enjoy views of

the Mississippi River and downtown Dubuque on the Fenelon Place Elevator, constructed in 1882 and described as the world's shortest, steepest scenic railway.

Day 5: Prairie du Chien, WI

Discover the rich history lining the streets of this notable city as you tour symbolic attractions like Villa Louis Residence and Grounds, a lovely Victorian estate dating back to the 1840s.

Day 6: La Crosse, WI

Admire the bronze statues, symbolic paintings, stained glass windows and striking mosaics in the Chapel of St. Rose before taking a stroll along the inviting Riverwalk and through Riverside International Friendship Garden.

Day 7: Winona, MN

From its sculpted bluffs to its mighty river and all places in between, this charming port town holds unparalleled beauty mixed with a cool urbanity and old-world charm that will surely captivate you.

Day 8: Red Wing, MN

Learn about one of Red Wing's most historic trades, pottery, with a visit to the Pottery Museum of Red Wing and then tour the historic St. James Hotel.

Day 9: Red Wing, MN

Disembark 8:00 a.m.

Enjoy nearby Minneapolis at your leisure or consider a Post-Cruise Premium Shore Excursion with airport transfer.

CRUISE ADD-ONS

See pages 12-13 for Premium Shore Excursions, Hotel Nights and Immersive City Stays.

THEME:

Heartland Heritage

2018 AMERICAN QUEEN VOYAGE DATE

CATEGORY	OS	LS	FS	AAA	AA	A	B	C	D	E	SO	SI
Sep 09	\$8,499	\$6,799	\$6,199	\$4,899	\$4,699	\$4,499	\$4,299	\$3,999	\$3,699	\$1,999	\$5,699	\$2,799

Fares are listed in U.S. dollars, per guest, double occupancy, with the exception of SI and SO categories. Port Charges: \$179.

RED WING (MINNEAPOLIS) TO ALTON (ST. LOUIS)

Aboard the Iconic American Queen

9-DAY VOYAGE

MARK TWAIN'S VISION OF THE MISSISSIPPI RIVER HOLDS TRUE ON THIS TIMELESS VOYAGE FROM THE SCENIC BLUFFS OF RED WING TO ST. LOUIS' BUSTLING UNION STATION MARKETPLACE.

Day 1: Minneapolis, MN

Your journey begins with a deluxe hotel stay in Minneapolis. The evening is yours to get acquainted with this culturally diverse city.

Day 2: Red Wing, MN

Depart 5:00 p.m.

Explore nearby Minneapolis at your leisure or consider a Pre-Cruise Premium Shore Excursion with afternoon transfer to the *American Queen*.

Day 3: Red Wing, MN

Learn about one of Red Wing's most historic trades, pottery, with a visit to the Pottery Museum of Red Wing, pick up a souvenir in the Bush & Main Street shopping district and then tour the historic St. James Hotel.

Day 4: La Crosse, WI

Admire the bronze statues, symbolic paintings, stained glass windows and striking mosaics of the Chapel of St. Rose before taking a stroll along the inviting Riverwalk and through Riverside International Friendship Garden.

Day 5: Dubuque, IA

Experience this town's unique flavor and enjoy views of the Mississippi River and downtown Dubuque on the Fenelon Place Elevator, constructed in 1882 and described as the world's shortest, steepest scenic railway.



Day 6: Bettendorf, IA (Quad Cities)

Explore the lively Quad Cities area in the Village of East Davenport and Quad City Botanicals Center or enjoy interactive exhibits at the John Deere Pavilion with The John Deere Experience Premium Shore Excursion.

Day 7: Burlington, IA

Uncover the rich history of the Sauk Indians, Heritage Hill and Snake Alley as you enjoy the sights and attractions of this scenic Mississippi River port town.

Day 8: Hannibal, MO

You will be enchanted by Mark Twain's quaint hometown as you explore the sites that inspired his beloved American classics and learn everything there is to know about this literary icon.

Day 9: Alton, IL

Disembark 8:00 a.m.

Enjoy nearby St. Louis at your leisure or consider a Post-Cruise Premium Shore Excursion with airport transfer.

CRUISE ADD-ONS

See pages 12-13 for Premium Shore Excursions, Hotel Nights and Immersive City Stays.

THEME:

Mark Twain

2018 AMERICAN QUEEN VOYAGE DATE

CATEGORY	OS	LS	FS	AAA	AA	A	B	C	D	E	SO	SI
Sep 16	\$8,499	\$6,799	\$6,199	\$4,899	\$4,699	\$4,499	\$4,299	\$3,999	\$3,699	\$1,999	\$5,699	\$2,799

Fares are listed in U.S. dollars, per guest, double occupancy, with the exception of SI and SO categories. Port Charges: \$179.

ALTON (ST. LOUIS) TO MEMPHIS

Aboard the Iconic American Queen



9-DAY VOYAGE

LET THE MUSICAL SOUNDS OF THE 50S AND 60S WHISK YOU AWAY ON THIS NOSTALGIC JOURNEY THROUGH AMERICA'S HISTORIC HEARTLAND. DANCE AND SING THE NIGHTS AWAY AND FILL YOUR DAYS WITH CULTURAL EXPLORATION ON THIS MAGNIFICENT VOYAGE FROM ST. LOUIS TO MEMPHIS.

Day 1: St. Louis, MO

Your journey begins with a deluxe hotel stay in St. Louis. The evening is yours to explore the Gateway City, take in the rich culture, diverse arts scene and local attractions such as the Gateway Arch.

Day 2: Alton, IL

Depart 5:00 p.m.

Explore St. Louis at your leisure or consider a Pre-Cruise Premium Shore Excursion with afternoon transfer to the *American Queen*.

Day 3: Chester, IL

Affectionately referred to as the "Home of Popeye," this colorful city will enchant you with its fun pop-culture atmosphere and charming Popeye Character Trail.

Day 4: Cape Girardeau, MO

Stroll along the riverfront and discover what led Mark Twain to write so eloquently about Cape Girardeau in *Life on the Mississippi*, the inspiration that General Ulysses S. Grant used to lead with firm conviction as he took command of the Union Army on the Mississippi in historic downtown.

Day 5: Paducah, KY

Prepare to be amazed at the influence Paducah had on the outcome of the Civil War. Generals U.S. Grant, Nathan Bedford Forrest and others made their astounding contributions to history here.

Day 6: Dover, TN

Tour Fort Donelson, the battlefield where Union and

Confederate soldiers fought in February of 1862. Discover the history of the past displayed inside the Visitor Center or commemorated on the battlefield, where monuments, plaques and cannons pay tribute to the battle that ultimately ended with the Union forces capturing Fort Donelson.

Day 7: New Madrid, MO

Take a guided tour of the New Madrid Historical Museum which shares the history of this river town from the Mississippian period through the 20th century.

Day 8: Ashport Landing, TN

Learn about the historic and archaeological significance of Fort Pillow on an in-depth tour of the grounds and reconstructed inner fort.

Day 9: Memphis, TN

Disembark 8:00 a.m.

Enjoy Memphis at your leisure or consider a Post-Cruise Premium Shore Excursion with airport transfer.

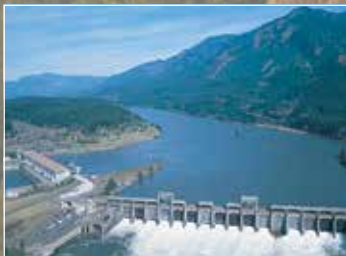
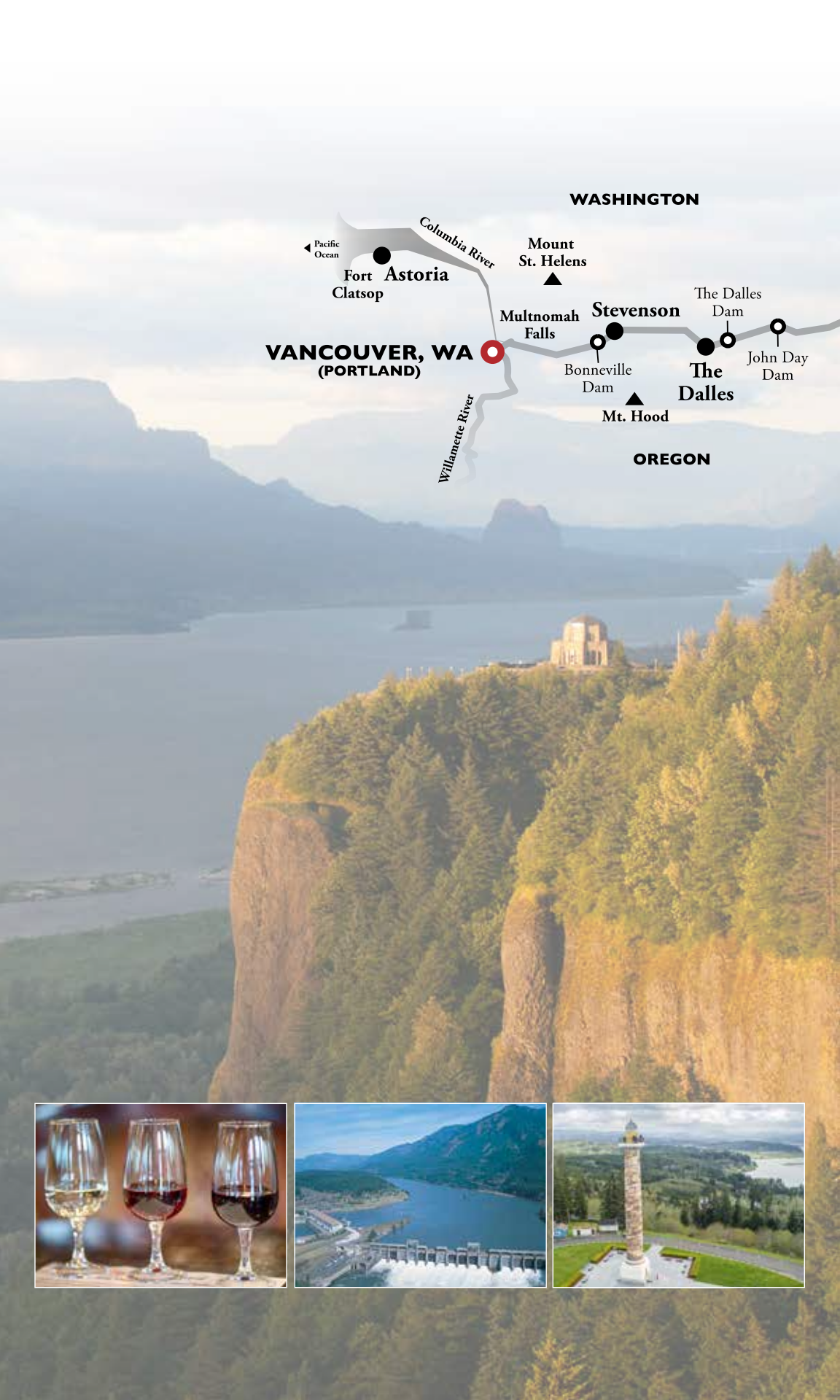
THEME:

The 50s and 60s Remembered

2018 AMERICAN QUEEN VOYAGE DATE

CATEGORY	OS	LS	FS	AAA	AA	A	B	C	D	E	SO	SI
Sep 23	\$8,499	\$6,799	\$6,199	\$4,899	\$4,699	\$4,499	\$4,299	\$3,999	\$3,699	\$1,999	\$5,699	\$2,799

Fares are listed in U.S. dollars, per guest, double occupancy, with the exception of SI and SO categories. Port Charges: \$179.





THE COLUMBIA AND SNAKE RIVERS

FRONTIERS, PIONEERS AND VINEYARDS

Nowhere is the timelessness of rivers more apparent than here in the pristine Pacific Northwest, a captivating corner of America which displays an abundance of inspiring natural beauty. Our voyages are specifically tailored to maximize daytime river cruising for optimal viewing of spectacular scenery and iconic highlights such as the Columbia River Gorge. As you cruise along the Columbia and Snake Rivers, you will bear witness to the precious land just as it appeared to Lewis and Clark in 1805 – majestic and unimaginably glorious.

At Multnomah Falls, snowmelt streams plunge over 600 feet in two tiered cascades down a sheer cliff face. Deeper than the Grand Canyon, Idaho’s Hells Canyon is a dramatic crack in the earth with raging waters best explored on an exciting jet boat ride. Near Portland, understand the raw power of nature in the collapsed volcanic crater of Mount St. Helens.

Travel into the heart of Washington’s wine country, where acclaimed wineries of the Pacific Northwest have made their mark among wine connoisseurs, and sample some of the finest vintages in the midst of breathtaking scenery.

A voyage aboard the elegant *American Empress* on the Columbia and Snake Rivers will show you the world from a new perspective.

2018 VOYAGE CALENDAR SUMMARY

The Columbia and Snake Rivers

AMERICAN EMPRESS



Columbia River



Snake River

Voyage Date	Total Days	Fares From	Itinerary	River	Page
Mar 17	5*	\$1,099	Roundtrip Vancouver, WA (Portland) <i>Ports: Astoria, Stevenson, The Dalles</i>		Online
Mar 21	5*	\$1,099	Roundtrip Vancouver, WA (Portland) <i>Ports: Astoria, Stevenson, The Dalles</i>		Online
Mar 25	5*	\$1,099	Roundtrip Vancouver, WA (Portland) <i>Ports: Astoria, Stevenson, The Dalles</i>		Online
Mar 29	5*	\$1,099	Roundtrip Vancouver, WA (Portland) <i>Ports: Astoria, Stevenson, The Dalles</i>		Online
Apr 01	9	\$2,399	Vancouver, WA (Portland) to Clarkston <i>Ports: Astoria, The Dalles, Stevenson, Richland, Clarkston</i>		54
Apr 08	9	\$2,799	Clarkston to Vancouver, WA (Portland) <i>Ports: Clarkston, Richland, The Dalles, Stevenson, Astoria</i>		55
Apr 15	9	\$2,799	Vancouver, WA (Portland) to Clarkston <i>Ports: Astoria, The Dalles, Stevenson, Richland, Clarkston</i>		54
Apr 22	9	\$2,799	Clarkston to Vancouver, WA (Portland) <i>Ports: Clarkston, Richland, The Dalles, Stevenson, Astoria</i>		55
Apr 29	9	\$2,799	Vancouver, WA (Portland) to Clarkston <i>Ports: Astoria, The Dalles, Stevenson, Richland, Clarkston</i>		54
May 06	9	\$3,099	Clarkston to Vancouver, WA (Portland) <i>Ports: Clarkston, Richland, The Dalles, Stevenson, Astoria</i>		55
May 13	9	\$3,099	Vancouver, WA (Portland) to Clarkston <i>Ports: Astoria, The Dalles, Stevenson, Richland, Clarkston</i>		54
May 20	9	\$3,099	Clarkston to Vancouver, WA (Portland) <i>Ports: Clarkston, Richland, The Dalles, Stevenson, Astoria</i>		55
May 27	9	\$3,099	Vancouver, WA (Portland) to Clarkston <i>Ports: Astoria, The Dalles, Stevenson, Richland, Clarkston</i>		54
Jun 03	9	\$3,499	Clarkston to Vancouver, WA (Portland) <i>Ports: Clarkston, Richland, The Dalles, Stevenson, Astoria</i>		55
Jun 10	9	\$3,499	Vancouver, WA (Portland) to Clarkston <i>Ports: Astoria, The Dalles, Stevenson, Richland, Clarkston</i>		54
Jun 17	9	\$3,499	Clarkston to Vancouver, WA (Portland) <i>Ports: Clarkston, Richland, The Dalles, Stevenson, Astoria</i>		55
Jun 24	9	\$3,499	Vancouver, WA (Portland) to Clarkston <i>Ports: Astoria, The Dalles, Stevenson, Richland, Clarkston</i>		54
Jul 01	9	\$3,499	Clarkston to Vancouver, WA (Portland) <i>Ports: Clarkston, Richland, The Dalles, Stevenson, Astoria</i>		55

*No pre-cruise hotel night on this date

Voyage Date	Total Days	Fares From	Itinerary	River	Page
Jul 08	9	\$3,499	Vancouver, WA (Portland) to Clarkston <i>Ports: Astoria, The Dalles, Stevenson, Richland, Clarkston</i>		54
Jul 15	9	\$3,499	Clarkston to Vancouver, WA (Portland) <i>Ports: Clarkston, Richland, The Dalles, Stevenson, Astoria</i>		55
Jul 22	9	\$3,499	Vancouver, WA (Portland) to Clarkston <i>Ports: Astoria, The Dalles, Stevenson, Richland, Clarkston</i>		54
Jul 29	9	\$3,499	Clarkston to Vancouver, WA (Portland) <i>Ports: Clarkston, Richland, The Dalles, Stevenson, Astoria</i>		55
Aug 05	9	\$3,499	Vancouver, WA (Portland) to Clarkston <i>Ports: Astoria, The Dalles, Stevenson, Richland, Clarkston</i>		54
Aug 12	9	\$3,499	Clarkston to Vancouver, WA (Portland) <i>Ports: Clarkston, Richland, The Dalles, Stevenson, Astoria</i>		55
Aug 19	9	\$3,499	Vancouver, WA (Portland) to Clarkston <i>Ports: Astoria, The Dalles, Stevenson, Richland, Clarkston</i>		54
Aug 26	9	\$3,499	Clarkston to Vancouver, WA (Portland) <i>Ports: Clarkston, Richland, The Dalles, Stevenson, Astoria</i>		55
Sep 02	9	\$3,499	Vancouver, WA (Portland) to Clarkston <i>Ports: Astoria, The Dalles, Stevenson, Richland, Clarkston</i>		54
Sep 09	9	\$3,499	Clarkston to Vancouver, WA (Portland) <i>Ports: Clarkston, Richland, The Dalles, Stevenson, Astoria</i>		55
Sep 16	9	\$3,499	Vancouver, WA (Portland) to Clarkston <i>Ports: Astoria, The Dalles, Stevenson, Richland, Clarkston</i>		54
Sep 23	9	\$3,499	Clarkston to Vancouver, WA (Portland) <i>Ports: Clarkston, Richland, The Dalles, Stevenson, Astoria</i>		55
Sep 30	9	\$3,499	Vancouver, WA (Portland) to Clarkston <i>Ports: Astoria, The Dalles, Stevenson, Richland, Clarkston</i>		54
Oct 07	9	\$3,499	Clarkston to Vancouver, WA (Portland) <i>Ports: Clarkston, Richland, The Dalles, Stevenson, Astoria</i>		55
Oct 14	9	\$3,499	Vancouver, WA (Portland) to Clarkston <i>Ports: Astoria, The Dalles, Stevenson, Richland, Clarkston</i>		54
Oct 21	9	\$3,099	Clarkston to Vancouver, WA (Portland) <i>Ports: Clarkston, Richland, The Dalles, Stevenson, Astoria</i>		55
Oct 28	9	\$3,099	Vancouver, WA (Portland) to Clarkston <i>Ports: Astoria, The Dalles, Stevenson, Richland, Clarkston</i>		54
Nov 04	9	\$2,799	Clarkston to Vancouver, WA (Portland) <i>Ports: Clarkston, Richland, The Dalles, Stevenson, Astoria</i>		55
Nov 12	5*	\$1,199	Roundtrip Vancouver, WA (Portland) <i>Ports: Astoria, Stevenson, The Dalles</i>		Online
Nov 16	5*	\$1,199	Roundtrip Vancouver, WA (Portland) <i>Ports: Astoria, Stevenson, The Dalles</i>		Online
Nov 20	5*	\$1,099	Roundtrip Vancouver, WA (Portland) <i>Ports: Astoria, Stevenson</i>		Online

*No pre-cruise hotel night on this date

VANCOUVER, WA (PORTLAND) TO CLARKSTON

Aboard the Elegant American Empress

9-DAY VOYAGE

UNCOVER A WEALTH OF NATURAL, AWE-INSPIRING BEAUTY AND ICONIC DESTINATIONS THAT WILL TAKE YOUR BREATH AWAY AS YOU TRAVEL EASTBOUND FROM VANCOUVER TO CLARKSTON.

Day 1: Vancouver, WA

Your journey begins with a deluxe hotel stay in Vancouver.

Day 2: Vancouver, WA

Depart 6:00 p.m.

Experience Vancouver at your leisure or consider a guided Pre-Cruise Premium Excursion in Portland. You will board the *American Empress* in Vancouver this afternoon.

Day 3: Astoria, OR

Visit the Astoria Column for mesmerizing views of the Columbia River and Pacific Ocean.

Day 4: The Dalles, OR

Peer into pioneer life at Fort Dalles Museum, explore the award-winning Columbia Gorge Discovery Center and browse the city's quaint boutiques.

Day 5: Stevenson, WA

Witness the beauty and bounty of nature as you tour the Columbia Gorge Interpretive Center and Bonneville Dam or journey to the cascading waters of America's most scenic waterfall, Multnomah Falls, on a Premium Shore Excursion.

Day 6: River Cruising

Join the Riverlorian on deck for engaging narration as you wind through the dramatic mountains and forested ridges of the region.

Day 7: Richland, WA (Tri-Cities)

Delve into Sacajawea State Park, the historic grounds where Lewis and Clark camped with their Native American guide, Sacajawea, in 1805.

Day 8: Clarkston, WA

Enjoy a day of discovery as you trace the footsteps of Lewis and Clark and visit Nez Perce National Historical Park.

Day 9: Clarkston, WA

Disembark 8:00 a.m.

Conclude your journey with a guided Post-Cruise Premium Excursion with airport transfer to Spokane.

CRUISE ADD-ONS

See pages 12-13 for Premium Shore Excursions, Hotel Nights and Immersive City Stays.

See voyage map on page 50.



2018 AMERICAN EMPRESS VOYAGE DATES

CATEGORY	LS	A	B	C	D	E	CS
Apr 01	\$5,899	\$4,099	\$3,699	\$2,799	\$2,699	\$2,399	\$4,199
Apr 15, 29	\$6,799	\$4,699	\$4,199	\$3,199	\$3,099	\$2,799	\$4,799
May 13, 27; Oct 28	\$7,599	\$5,299	\$4,799	\$3,599	\$3,499	\$3,099	\$5,399
Jun 10, 24; Jul 08, 22; Aug 05, 19; Sep 02, 16, 30; Oct 14	\$8,499	\$5,899	\$5,299	\$3,999	\$3,899	\$3,499	\$5,999

Fares quoted are in U.S. dollars, are per guest and based on double occupancy with the exception of category CS. Port Charges: \$179.

AIRPORTS & TRANSFERS

Voyages are one-way starting in Vancouver, Washington. The closest airport is the Portland International Airport (PDX) in Portland, Oregon. American Queen Steamboat Company provides free transfers from the designated pre-cruise hotel to the *American Empress* in Vancouver, Washington, on embarkation day. Transfers on disembarkation day are available for purchase. A transfer from the dock in Clarkston, Washington to the post-cruise hotel or airport in Spokane, Washington, is available for \$49 per guest. A combination city-tour and airport or hotel transfer is also offered: the Spokane tour and transfer is available for \$69 per guest. All transfers and tours are operated by chartered motorcoach to ensure quality and convenience.

CLARKSTON TO VANCOUVER, WA (PORTLAND)

Aboard the Elegant American Empress

9-DAY VOYAGE

THE TIMELESSNESS AND DEEP-ROOTED HISTORY OF THE REGION ARE REVEALED AT EACH AND EVERY PORT AS YOU TRAVEL WESTBOUND FROM CLARKSTON TO VANCOUVER.

Day 1: Spokane, WA

Your journey begins with a deluxe hotel stay in Spokane.

Day 2: Clarkston, WA

Depart 6:00 p.m.

Take time to explore Spokane at your leisure or consider a Pre-Cruise Premium Excursion before your transfer to Clarkston where your journey begins with an evening dinner cruise.

Day 3: Clarkston, WA

Enjoy a day of discovery in Lewiston as you trace the footsteps of Lewis and Clark and visit Nez Perce National Historical Park or set out on a jet boat tour of Hells Canyon with our Premium Shore Excursion.

Day 4: Richland, WA (Tri-Cities)

Delve into Sacajawea State Park, the historic grounds where Lewis and Clark camped with their Native American guide, Sacajawea, in 1805.



Day 5: River Cruising

Behold the beauty of nature as you wind through the dramatic canyon scenery and diverse agricultural landscapes of the great Pacific Northwest.

Day 6: The Dalles, OR

Peer into pioneer life at Fort Dalles Museum, browse the city's quaint boutiques or tour an extensive collection of antique cars and planes on a Premium Excursion to the Western Aeroplane and Automobile Museum.

Day 7: Stevenson, WA

Witness the beauty and bounty of nature as you tour the Columbia Gorge Interpretive Center and Bonneville Dam.

Day 8: Astoria, OR

Visit the Astoria Column for mesmerizing views of the Columbia River and Pacific Ocean.

Day 9: Vancouver, WA

Disembark 8:00 a.m.

Conclude your journey with a guided Post-Cruise Premium Excursion in Portland with airport transfer.

CRUISE ADD-ONS

See pages 12-13 for Premium Shore Excursions, Hotel Nights and Immersive City Stays.

See voyage map on page 50.



2018 AMERICAN EMPRESS VOYAGE DATES

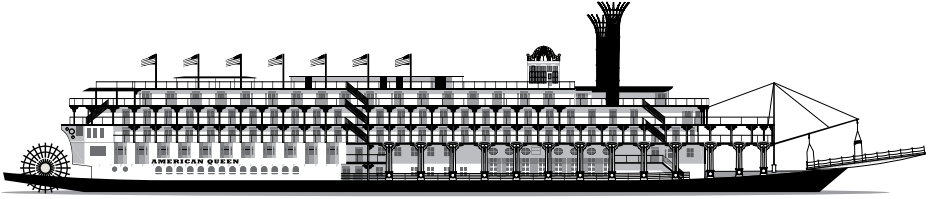
CATEGORY	LS	A	B	C	D	E	CS
Apr 08, 22; Nov 04	\$6,799	\$4,699	\$4,199	\$3,199	\$3,099	\$2,799	\$4,799
May 06, 20; Oct 21	\$7,599	\$5,299	\$4,799	\$3,599	\$3,499	\$3,099	\$5,399
Jun 03, 17; Jul 01, 15, 29; Aug 12, 26; Sep 09, 23; Oct 07	\$8,499	\$5,899	\$5,299	\$3,999	\$3,899	\$3,499	\$5,999

Fares quoted are in U.S. dollars, are per guest and based on double occupancy with the exception of category CS. Port Charges: \$179.

AIRPORTS & TRANSFERS

Voyages are one-way starting in Clarkston, Washington. The closest airport is the Spokane International Airport (GEG) in Spokane, Washington. There is also a small airport with limited regional air service from Lewiston, Idaho, a 15-minute taxi ride from the Clarkston, Washington, boat dock. American Queen Steamboat Company provides free transfers from the designated pre-cruise hotel to the *American Empress* in Clarkston, Washington, on embarkation day. Transfers on disembarkation day are available for purchase. A transfer from the dock in Vancouver, Washington, to the post-cruise hotel or to the airport in Portland, Oregon, is offered for \$25 per guest. A combination city-tour and airport or hotel transfer is also offered: the Portland tour and transfer is available for \$69 per guest. All transfers and tours are operated by chartered motorcoach to ensure quality and convenience.

AMERICAN QUEEN DECKPLANS



SPECIFICATIONS

YEAR BUILT/REFURBISHED: 1995/2017 **LENGTH:** 420 FT. **PASSENGER DECKS:** 6
SUITES AND STATEROOMS: 213 **PASSENGERS:** 414 **CREW:** 172



SUITE AND STATEROOM CATEGORIES

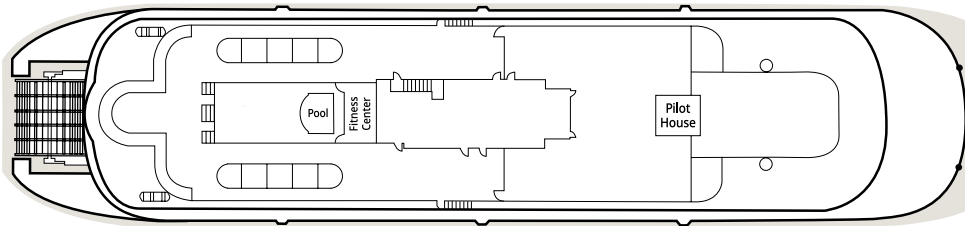
OS	OWNER'S SUITES WITH EXCLUSIVE VERANDA	B	OUTSIDE STATEROOMS WITH OPEN VERANDA
LS	LUXURY SUITES WITH PRIVATE OR OPEN VERANDA	C	OUTSIDE STATEROOMS WITH OPEN VERANDA
FS	FAMILY SUITES WITH OPEN VERANDA	D	DELUXE OUTSIDE STATEROOMS WITH BAY WINDOW
AAA	SUITES WITH OPEN VERANDA	E	INSIDE STATEROOMS
AA	SUPERIOR OUTSIDE STATEROOMS WITH OPEN VERANDA	SO	SINGLE OUTSIDE STATEROOMS WITH OPEN VERANDA
A	DELUXE OUTSIDE STATEROOMS WITH PRIVATE VERANDA	SI	SINGLE INSIDE STATEROOMS

FAMILY-STYLE SUITES AND STATEROOMS

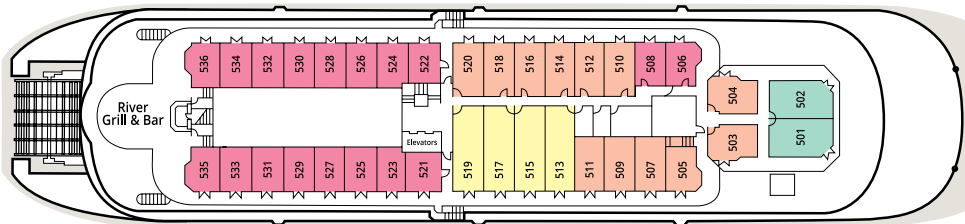
Family-style suites and staterooms are an excellent choice for family and friends who wish to travel together, yet maintain a bit of privacy in their own space. Featuring separate entrances with interior connecting doors and available in different configurations, category E inside staterooms 458 to 462 connect with the adjoining odd numbered B outside staterooms 409 to 417. The unique layouts of Luxury Suites 513, 515, 517 and 519 feature a queen bed and a queen sofa bed to comfortably accommodate up to four guests in a single suite.

ACCESSIBLE SUITES AND STATEROOMS

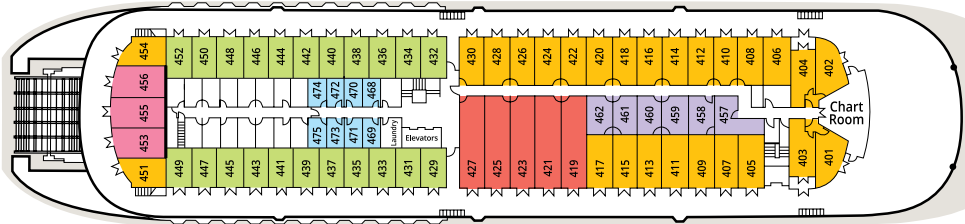
Accessible suites and staterooms are available in a variety of categories and range from 160 sq. ft. to 250 sq. ft. Staterooms 201, 202, 305, 306, 457, 520, 521 and 522 are wheelchair accessible with a tub/shower combination while category C staterooms offer larger showers with shower chairs available upon request. Category E stateroom 381 features a roll-in shower. The *American Queen's* two elevators provide access to all decks, excluding the Sun Deck.



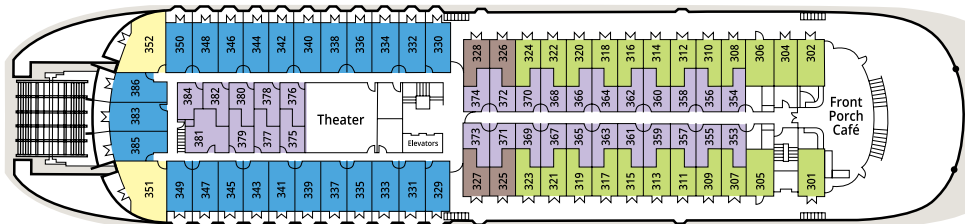
DECK 6 - SUN DECK



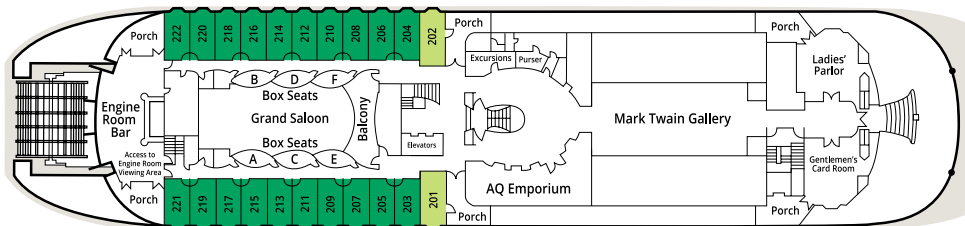
DECK 5 - PROMENADE DECK



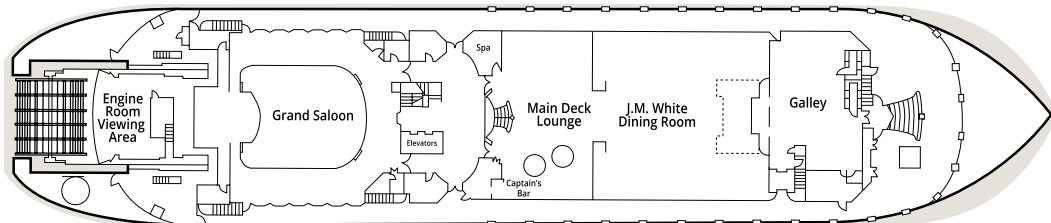
DECK 4 - OBSERVATION DECK



DECK 3 - TEXAS DECK



DECK 2 - CABIN DECK



DECK 1 - MAIN DECK

AMERICAN QUEEN SUITES AND STATEROOMS

WELCOME TO YOUR HOME ABOARD THE ELEGANT *AMERICAN QUEEN* WHERE YOU CAN RELAX IN A WARM, INVITING ATMOSPHERE OF ANTEBELLUM CHARM WITHOUT SACRIFICING MODERN CONVENIENCES. FINE LINENS AND PLUSH BEDDING WILL ENSURE YOU ARE WELL-RESTED TO FULLY ENJOY EVERY INCLUDED SHORE TOUR, HISTORICAL LECTURE AND NIGHTLY ENTERTAINMENT. OPEN VERANDA CATEGORIES AFFORD NEIGHBORING GUESTS THE UNIQUE OPPORTUNITY TO ENJOY A SOCIAL ATMOSPHERE, SWAPPING STORIES AND FORMING LASTING FRIENDSHIPS WITH FELLOW TRAVELERS. FROM COZY STATEROOMS TO OPULENT SUITES, THE *AMERICAN QUEEN* HAS ACCOMMODATIONS FOR A VARIETY OF LIFESTYLES AND BUDGETS.

OS OWNER'S SUITES WITH EXCLUSIVE VERANDA

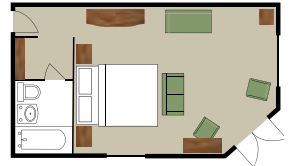
Perched atop the *American Queen* in the best location with sprawling views of the river, you will feel like Thomas P. Leathers, one of the wealthiest and most successful steamboat owners of the 19th century. Open your French doors and step out onto your veranda to unwind on your amply furnished patio. Adorned with 11-ft. vaulted ceilings, overhead lighting, a cozy interior



lounging area with sofa-bed and cocktail tables, these expansive suites can accommodate up to three guests and epitomize luxurious river cruising. Boasting every essential amenity while providing the ultimate in relaxation and pampering, you will relish the many exclusive benefits of our

Commodore Services while being well attended to by your personal River Butler.

- ★ 348 sq. ft. with 690 sq. ft. Exclusive Veranda
- ★ Queen Bed
- ★ Tub/Shower Combination
- ★ Lounging Area with Sofa-bed
- ★ Dressing Area with Granite Vanity, Mirror and Desk
- ★ Flat-screen TV
- ★ Keurig® Coffee Maker & Personal Refrigerator
- ★ French Doors Open to Exclusive Veranda
- ★ Furnished Patio with Sofa, Two Chairs and Coffee Table
- ★ Promenade Deck
- ★ *Commodore Services* including River Butler



Guests holding reservations for suite-level accommodations will receive our exclusive *Commodore Services*. This elite-level of service includes pre-boarding privileges, a bottle of wine with fresh fruit basket upon arrival, preferred dining arrangements, reserved balcony seating in the Grand Saloon theater and a private reception with Senior Officers of the *American Queen*.

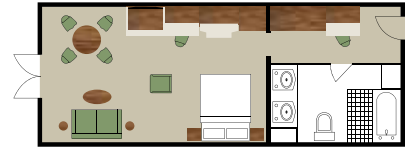
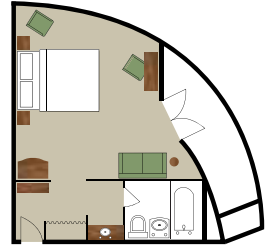


Guests of our Owner's Suites and Luxury Suites will also receive the services of a friendly River Butler. River Butler service includes a warm welcome with a tour of your suite, unpacking and hanging of clothes in addition to the preparation and packing of your luggage, laundry and pressing services along with shoe shine and conditioning, afternoon tea served in your suite, breakfast and dinner served on your private veranda, in-suite pre-dinner canapés and post-dinner sweets, as well as a personal escort to your reserved balcony seating in the Grand Saloon theater. *River Butler service is limited to suite categories OS and LS.*

Note: Stateroom information provided here is a general representation of the stateroom categories. Actual room configurations, features and amenities vary slightly between and within stateroom categories.

LS LUXURY SUITES WITH PRIVATE OR OPEN VERANDA

Our spacious, elegant suites are furnished with authentic Antebellum décor and fabulous antiques providing the warm ambiance of a fine Southern estate home. Open your French doors and delight in sweeping river views as you sip a beverage and share conversation in your cozy sitting area. With two configurations to choose from, these intimate suites accommodate a variety of travel needs; they are the ideal choice for family and friends vacationing together.



- ★ 353-363 sq. ft. with Private or Open Veranda
- ★ Queen Bed or Two Single Beds
- ★ Tub/Shower Combination
- ★ Sitting Area with Sofa-bed
- ★ Vanity Mirror and Desk
- ★ Flat-screen TV
- ★ Keurig® Coffee Maker & Personal Refrigerator
- ★ French Doors Open to Deck or Veranda
- ★ Promenade and Texas Decks
- ★ Interior and/or Exterior Access
- ★ *Commodore Services* including River Butler



It is important to note that our Luxury Suites located on the Texas deck are in close proximity to the paddlewheel. While many guests love the allure of the traditional paddlewheel experience, others may find the authentic turning of the paddlewheel to be slightly noisier than they would like at times.

FS FAMILY SUITES WITH OPEN VERANDA

Our Family Suites offer the perfect respite from a busy day on the river. Settle in your sitting area, open the doors to your veranda and peacefully watch the river banks of America's heartland drift by. Enjoy the amenities of these spacious, single-room suites accommodating a variety of travel needs and are the ideal choice for families and friends vacationing together.



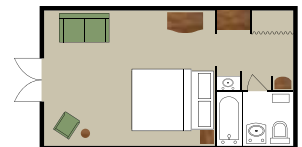
- ★ 345 sq. ft. with Open Veranda
- ★ Queen Bed
- ★ Tub/Shower Combination
- ★ Sitting Area with Sofa-bed
- ★ Flat-screen TV
- ★ French Doors Open to Veranda
- ★ Interior and Exterior Access
- ★ Observation Deck
- ★ *Commodore Services* (excludes River Butler)

AAA SUITES WITH OPEN VERANDA

You will feel right at home on the river in our magnificent suites. Indulge in a soothing soak in your tub and then retire to your cozy armchair or sofa, prop your feet up on the ottoman and read through the *River Times*, our daily program, to discover the delights that await you. As a guest of this fine suite, you will also enjoy the benefits of our exclusive suite-level *Commodore Services*.



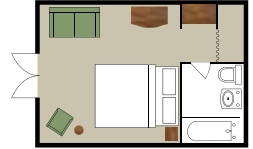
- ★ 230 sq. ft. with Open Veranda
- ★ Queen Bed or Two Single Beds
- ★ Tub/Shower Combination
- ★ Sitting Area with Sofa-bed
- ★ Vanity Mirror and Desk
- ★ Flat-screen TV
- ★ French Doors Open to Deck
- ★ Promenade Deck
- ★ Interior and/or Exterior Access
- ★ *Commodore Services* (excludes River Butler)



AA SUPERIOR OUTSIDE STATEROOMS WITH OPEN VERANDA

Settle in your sitting area, open the French doors to the deck and greet the day as the banks of the river slip majestically by. Some staterooms in this category offer a view of the paddlewheel, while others provide expansive views of America's heartland.

- ★ 210 sq. ft. with Open Veranda
- ★ Queen Bed or Two Single Beds
- ★ Tub/Shower Combination
- ★ Flat-screen TV
- ★ Sitting Area
- ★ Vanity Mirror and Desk
- ★ French Doors Open to Deck
- ★ Interior and/or Exterior Access
- ★ Promenade and Observation Decks



A DELUXE OUTSIDE STATEROOMS WITH PRIVATE VERANDA

With your own private veranda, these staterooms are so enjoyable you might decide to extend your journey. Sit in your cozy armchairs and prop your feet up on the ottoman as you read through the *River Times*, our daily program, and discover the delights that await you.

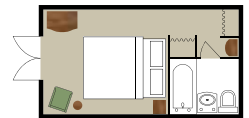
- ★ 190 sq. ft. with 40 sq. ft. Private Veranda
- ★ Queen Bed or Two Single Beds
- ★ Tub/Shower Combination
- ★ Flat-screen TV
- ★ French Doors Open to Private Veranda
- ★ Interior Access
- ★ Texas Deck



B OUTSIDE STATEROOMS WITH OPEN VERANDA

Can you imagine opening French doors to a sweeping river vista and the sweet scent of magnolia trees? There's no need to dream any longer in these plush accommodations. Sit on the deck outside your stateroom and greet early-morning strollers, relax in bed with your favorite book or soak in a hot bath.

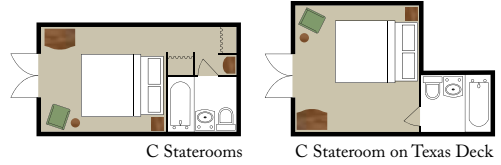
- ★ 190-205 sq. ft. with Open Veranda
- ★ Queen Bed or Two Single Beds
- ★ Tub/Shower Combination
- ★ Flat-screen TV
- ★ French Doors Open to Deck
- ★ Interior and/or Exterior Access
- ★ Observation Deck



C SO OUTSIDE STATEROOMS WITH OPEN VERANDA

Settle in your sitting area, open the French doors to the deck and greet the day as the banks of the river slip majestically by. Sit on the deck outside your stateroom and take in the expansive views or enjoy a leisurely morning in bed with room service.

- ★ 140-160 sq. ft. (C); 140 sq. ft. (SO) with Open Verandas
- ★ Queen Bed or Two Single Beds
- ★ Shower or Tub/Shower Combination
- ★ Flat-screen TV
- ★ French Doors Open to Deck
- ★ Exterior Access
- ★ Observation, Texas and Cabin Decks



D DELUXE OUTSIDE STATEROOMS WITH BAY WINDOW

An expansive bay window overlooking the ever-changing scenery of America's heartland is the main draw of this spacious category. Curl up in front of the window with a new novel and savor a moment that belongs to only you.

- ★ 190 sq. ft. with Bay Window
- ★ Queen Bed or Two Single Beds
- ★ Tub/Shower Combination
- ★ Flat-screen TV
- ★ Bay Window
- ★ Interior Access
- ★ Cabin Deck



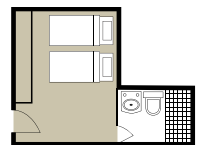
E SI* INSIDE STATEROOMS

Surrounded by wonderful period details and with every modern convenience, you will find your cares disappear within moments upon entering these cozy havens. Ample shelving and storage spaces keep your necessities out of the way but easily accessible.

- ★ 132-140 sq. ft. (E); 80 sq. ft. (SI)
- ★ Queen Bed or Two Single Beds
- ★ Shower or X-Large Shower
- ★ Flat-screen TV
- ★ Promenade, Observation and Texas Decks

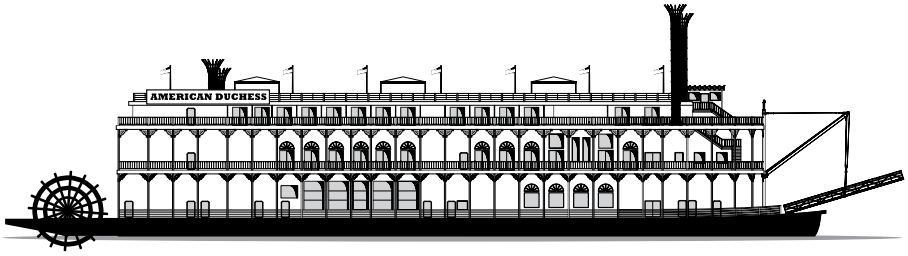


*SI cabins are slightly scaled down to accommodate the independent traveler and feature one single bed.



Note: Stateroom information provided here is a general representation of the stateroom categories. Actual room configurations, features and amenities vary slightly between and within stateroom categories.

AMERICAN DUCHESS DECKPLANS



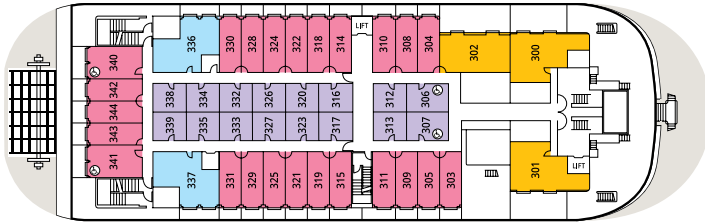
SPECIFICATIONS

YEAR BUILT HULL (1995)
 SUPERSTRUCTURE (2017)
LENGTH 340 FT.
PASSENGER DECKS 4
SUITES 83
PASSENGERS/CREW 166/82

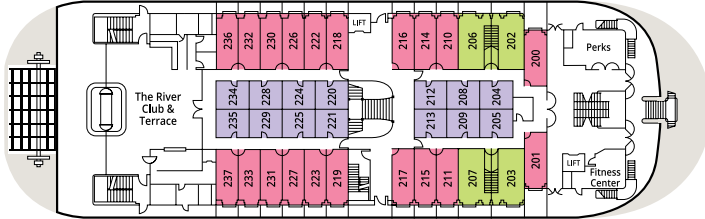
SUITE CATEGORIES

- OS** OWNER'S SUITES WITH PRIVATE BALCONY
- LFS** LOFT SUITES WITH PRIVATE BALCONY
- DS** DELUXE SUITES WITH PRIVATE BALCONY
- VS** VERANDA SUITES WITH PRIVATE BALCONY
- IS** INTERIOR SUITES

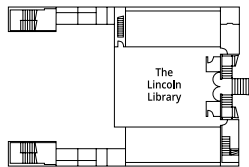
SUITE CATEGORIES



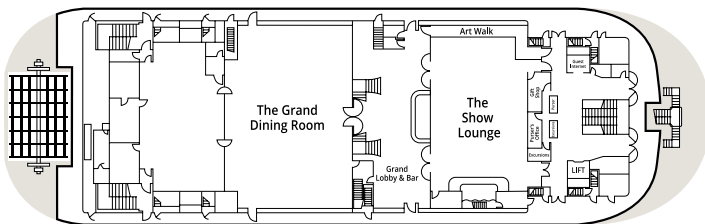
DECK 3 - CABIN DECK



DECK 2 - OBSERVATION DECK



LOWER MEZZANINE
 (BETWEEN DECKS 1 AND 2)



DECK 1 - MAIN DECK

Accessible Suites: The *American Duchess*' two lifts/elevators provide access to all decks. ADA Suites 306, 307, 340 and 341 are wheelchair accessible and feature a roll-in shower.

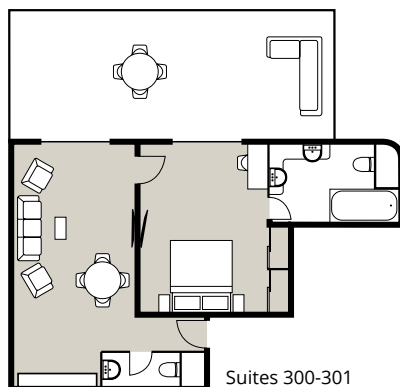
AMERICAN DUCHESS SUITES

WELCOME TO YOUR HOME ABOARD THE LUXURIOUS, ALL-SUITE *AMERICAN DUCHESS* WHERE YOU CAN RELAX IN A LAVISH ATMOSPHERE BRIMMING WITH THE FINEST AMENITIES. PREMIUM LINENS AND PLUSH BEDDING WILL ENSURE YOU ARE WELL-RESTED TO FULLY ENJOY EACH INCLUDED SHORE EXCURSION, HISTORICAL LECTURE AND NIGHTLY ENTERTAINMENT. EACH ELEGANT SUITE BOASTS A FLAT-SCREEN TV, MINI REFRIGERATOR, KEURIG® COFFEE MAKER AND SAFE FOR YOUR COMFORT AND CONVENIENCE.

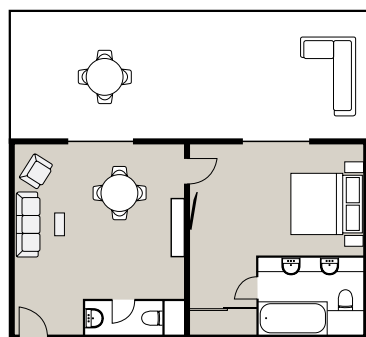
OS OWNER'S SUITES WITH PRIVATE BALCONY

Nestled in the best location with sprawling views of the river, our two-room Owner's Suites will have you feeling like Thomas P. Leathers, one of the wealthiest and most successful steamboat owners of the 19th century. Slide open the glass doors, accessible from both the bedroom and lounge areas, and step out onto your expansive, private balcony to unwind and take in the beauty of riverside America. Adorned with an intimate interior lounging area amply furnished with a queen sofa-bed, cocktail tables and desk, these lavish suites can accommodate up to four guests and epitomize luxurious river cruising. Boasting every essential modern amenity while providing the ultimate in relaxation and pampering, you will relish the many exclusive benefits of our *Commodore Services* while being well attended to by your personal River Butler.

- ★ 550 sq. ft. with Private Balcony
- ★ Queen Bed or Two Twin Beds
- ★ Full Bathroom featuring floor to ceiling marble with Tub/Shower Combination
- ★ Half Bathroom
- ★ Furnished Lounge Area with Sofa-bed and Desk
- ★ Keurig® Coffee Maker and Mini Refrigerator
- ★ 2 Flat-screen TVs
- ★ Sliding Glass Doors to Balcony
- ★ Cabin Deck
- ★ *Commodore Services* including River Butler



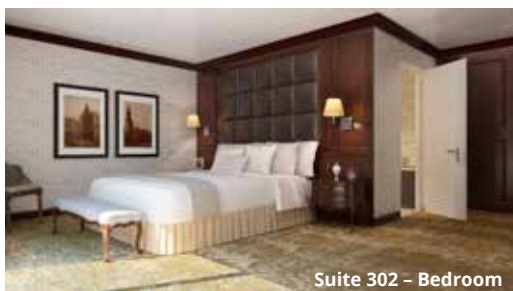
Suites 300-301



Suite 302



Suite 302 - Living Room



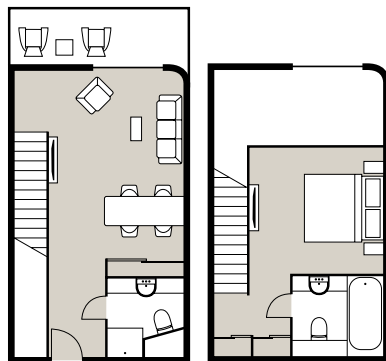
Suite 302 - Bedroom

Note: Suite information provided here is a general representation of the suite categories. Actual room configurations, features and amenities vary slightly between and within suite categories.

AMERICAN DUCHESS SUITES

LFS LOFT SUITES WITH PRIVATE BALCONY

Our spacious, elegant Loft Suites are your new home away from home. The lower level features a full bathroom, small dining area, a beautiful lounge section furnished with a queen sofa-bed and desk area, along with sliding doors to access your private balcony where you can unwind and take in the majestic, riverside scenery. Ascend the stairs to the upper level of the loft and you will discover a tranquil retreat with its semi-private bedroom, a full bathroom and plentiful closet space. A large picture window in front of the staircase affords river views from the upper level bedroom. These expansive suites accommodate a variety of travel needs and are the ideal choice for family and friends vacationing together. Boasting every essential modern amenity, you will relish the many exclusive benefits of our *Commodore Services* while being well attended to by your personal River Butler.



350 sq. ft. Lower

200 sq. ft. Upper

- ★ 550 sq. ft. with Private Balcony
- ★ Queen Bed or Two Twin Beds
- ★ 2 Full Bathrooms featuring floor to ceiling marble with Tub/Shower Combination
- ★ Furnished Lounge Area with Sofa-bed and Desk
- ★ Keurig® Coffee Maker and Mini Refrigerator
- ★ 2 Flat-screen TVs
- ★ Sliding Glass Doors to Balcony
- ★ Observation Deck
- ★ *Commodore Services* including River Butler

*The first Loft Suites
on U.S. rivers!*



Guests holding reservations for Owner's Suite (OS) and Loft Suite (LFS) accommodations will receive our exclusive *Commodore Services* which include pre-boarding privileges, a bottle of wine and fruit basket upon arrival, preferred dining room seating in The Grand Dining Room, reserved seating in The Show Lounge and an invitation to dine with Senior Officers of the *American Duchess*.



Guests of these elite-level suites will also receive the additional services of a friendly River Butler. This service includes a warm welcome with a tour of your suite, unpacking and hanging of clothes in addition to preparation and packing of your luggage, laundry and pressing services along with shoe shine and conditioning, afternoon tea served in your suite, breakfast and dinner served on your private balcony upon request, in-suite pre-dinner canapés and post-dinner sweets, as well as a personal escort to your reserved seating in The Show Lounge.

DS DELUXE SUITES WITH PRIVATE BALCONY

Our two-room Deluxe Suites give you the feeling of a fine estate home. Upon entry you will discover a lounge area with half bath, a queen sofa-bed and small desk area.

Off of the lounge you will enter your private bedroom complete with a full bath, plentiful closet space and sliding glass doors to your private balcony. Indulge in a soothing soak in your tub and then retire to your cozy armchair, prop your feet up and read through the *River Times*, our daily program, to discover the delights that await you.

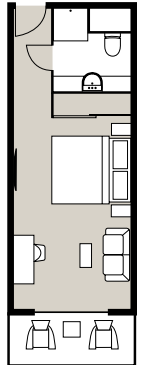
- ★ 450 sq. ft. with Private Balcony
- ★ Queen Bed or Two Single Beds
- ★ Full Bathroom featuring floor to ceiling marble with Tub/Shower Combination
- ★ Half Bathroom
- ★ 2 Flat-screen TVs
- ★ Furnished Lounge Area with Sofa-bed and Desk
- ★ Keurig® Coffee Maker and Mini Refrigerator
- ★ Sliding Glass Doors to Balcony
- ★ Cabin and Observation Decks



VS VERANDA SUITES WITH PRIVATE BALCONY

Our Veranda Suites offer the perfect respite from a busy day on the river. Settle in at your desk or relax on the couch, slide open the doors to your private balcony and peacefully watch the river banks of America's heartland drift by. Enjoy the finest amenities in these luxurious accommodations featuring generous closet space and a full bathroom.

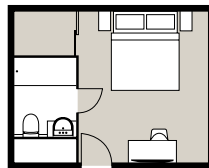
- ★ 240 sq. ft. with Private Balcony
 - ★ Queen Bed or Two Single Beds
 - ★ Full Bathroom with Shower
 - ★ Furnished Lounge Area with Sofa-bed and Desk
 - ★ Keurig® Coffee Maker and Mini Refrigerator
 - ★ Flat-screen TV
 - ★ Sliding Glass Doors to Balcony
 - ★ Cabin and Observation Decks
- Note: ADA suites are 330 sq. ft.*



IS INTERIOR SUITES

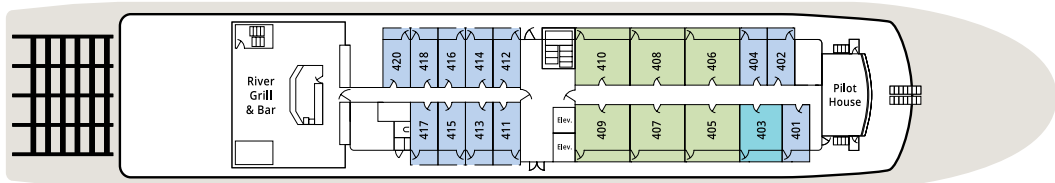
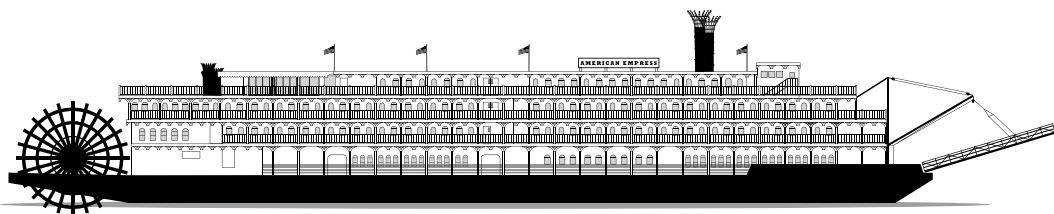
Surrounded by every modern convenience, you will find your cares disappear within moments upon entry to our welcoming Interior Suites. The airy, open floor plan of these tranquil retreats provides plenty of personal space for you to comfortably move about and feel right at home on the river. Enjoy special touches such as ample closet space and a writing desk with chair.

- ★ 180 sq. ft.
 - ★ Queen Bed or Two Single Beds
 - ★ Full Bathroom with Shower
 - ★ Writing Desk
 - ★ Keurig® Coffee Maker and Mini Refrigerator
 - ★ Flat-screen TV
 - ★ Cabin and Observation Decks
- Note: ADA suites are 200 sq. ft.*

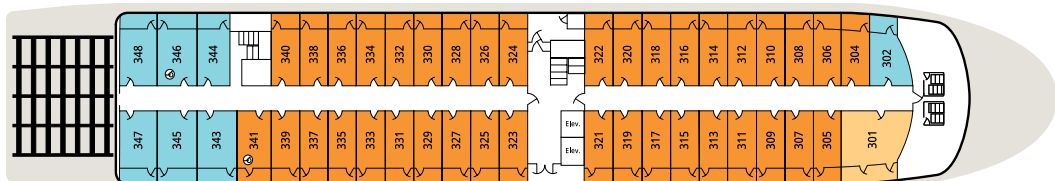


Note: Suite information provided here is a general representation of the suite categories. Actual room configurations, features and amenities vary slightly between and within suite categories.

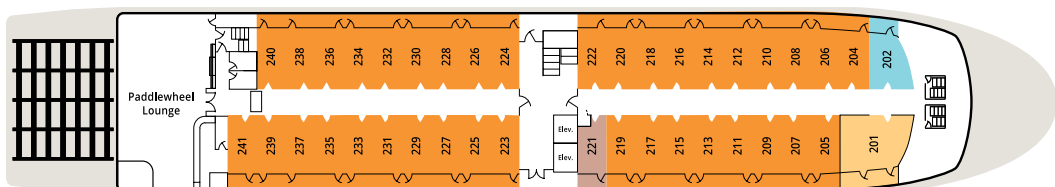
AMERICAN EMPRESS DECKPLANS



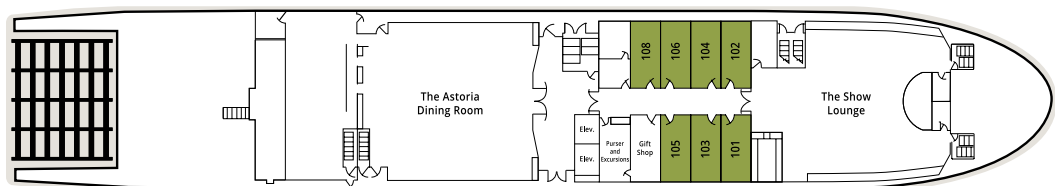
DECK 4 - VISTA VIEW DECK



DECK 3 - DISCOVERY DECK



DECK 2 - FRONTIER DECK



DECK 1 - EXPLORER DECK

STATEROOM CATEGORIES

- LS** LUXURY SUITES WITH VERANDA
- A** SUITES WITH VERANDA
- B** SUPERIOR VERANDA STATEROOMS
- C** DELUXE VERANDA STATEROOMS
- CS** SINGLE OUTSIDE STATEROOM WITH VERANDA
- E** VERANDA STATEROOMS
- D** OUTSIDE STATEROOMS WITH WINDOW

SPECIFICATIONS

YEAR BUILT / REFRUBISHED . . . 2003 / 2014
PASSENGERS 223
SUITS AND STATEROOMS 112
CREW 83
LENGTH 360 FT.
PASSENGER DECKS 4

ACCESSIBLE STATEROOMS

The *American Empress*' two elevators provide access to all decks. Stateroom 341 is wheelchair accessible with a roll-in shower and a queen bed. Stateroom 346 is wheelchair accessible with a roll-in shower and twin beds.

AMERICAN EMPRESS SUITES AND STATEROOMS

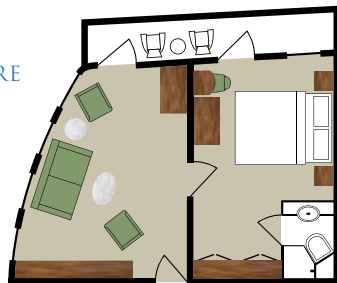
WELCOME TO YOUR HOME ON THE COLUMBIA AND SNAKE RIVERS. EACH *AMERICAN EMPRESS* ACCOMMODATION FEATURES A CUSTOM-BUILT HARDWOOD ENTERTAINMENT CENTER AND SPACIOUS, ILLUMINATED ARMOIRE. FINE LINENS AND PLUSH BEDDING WILL ENSURE YOU ARE WELL-RESTED TO FULLY ENJOY EVERY INCLUDED SHORE TOUR, HISTORICAL LECTURE AND NIGHTLY ENTERTAINMENT. A FLAT-SCREEN TV, MINI REFRIGERATOR, KEURIG® COFFEE MAKER AND SAFE ARE PROVIDED FOR YOUR COMFORT AND CONVENIENCE.

LS LUXURY SUITES WITH VERANDA

Feel as if you own the *American Empress* in this expansive suite. You are treated to sweeping river views through large windows facing forward and starboard. Step out onto your private veranda and scan the riverbanks for wildlife. Sip a beverage and converse in your spacious sitting room complete with a large flat-screen TV, premium sound, cocktail table and wet bar. As a guest of our Luxury Suite, you will be treated to exclusive suite-level *Commodore Services* and amenities, as well as River Butler service.



- ★ 410 sq. ft.
- ★ Two Twin Beds or One Queen Bed
- ★ Shower
- ★ Flat-screen TV
- ★ Sitting Area with Sofa
- ★ Private Veranda
- ★ Discovery and Frontier Decks
- ★ *Commodore Services* including River Butler



Guests holding reservations for Luxury Suite accommodations will receive our exclusive *Commodore Services* which include a bottle of wine from the region and fruit basket upon arrival, preferred dining arrangements, reserved seating in The Show Lounge theater and an invitation to dine with Senior Officers of the *American Empress*.



Guests of our Luxury Suites will also receive the additional services of a friendly River Butler. River Butler service includes a warm welcome with a tour of your suite, unpacking and hanging of clothes in addition to preparation and packing of your luggage, laundry and pressing services along with shoe shine and conditioning, afternoon tea served in your suite, breakfast and dinner served on your private veranda upon request, in-suite pre-dinner canapés and post-dinner sweets, as well as a personal escort to your reserved seating in The Show Lounge.

Note: Stateroom information provided here is a general representation of the stateroom categories. Actual features and amenities vary slightly between and within stateroom categories. Verandas on the Vista View Deck are semiprivate because the public walkway runs just over the railing. Please call and ask your reservations agent for details.

A SUITES WITH VERANDA

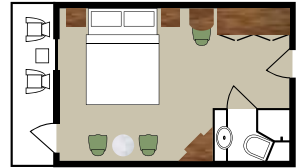
Enjoy a large suite with a comfortable sitting area and premium sound system. Your semi-private veranda provides splendid river views from four stories above the river and direct access to the wraparound Vista View Deck, perfect for sharing a view and socializing with fellow guests.



- ★ 310 sq. ft.
- ★ Two Twin Beds or One Queen Bed
- ★ Shower
- ★ Flat-screen TV
- ★ Sitting Area with Sofa
- ★ Semi-private Veranda
- ★ Vista View Deck

B SUPERIOR VERANDA STATEROOMS

Enjoy your spacious stateroom with a cozy sitting area or panoramic view through large windows. Your private veranda provides a quiet place to watch the ever-changing scenery.



- ★ 210-250 sq. ft.
- ★ Two Twin Beds or One Queen Bed
- ★ Shower
- ★ Flat-screen TV
- ★ Sitting Area
- ★ Private Veranda
- ★ Vista View, Discovery and Frontier Decks

Stateroom 403 features a semi-private veranda.

C DELUXE VERANDA STATEROOMS

Deluxe veranda staterooms are a popular choice for many couples. Share a toast on your private veranda as you glide through the fresh air of the Pacific Northwest.



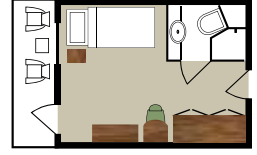
- ★ 180 sq. ft.
- ★ Two Twin Beds or One Queen Bed
- ★ Shower
- ★ Flat-screen TV
- ★ Private Veranda
- ★ Discovery and Frontier Decks

Note: Stateroom information provided here is a general representation of the stateroom categories. Actual features and amenities vary slightly between and within stateroom categories. Verandas on the Vista View Deck are semi-private because the public walkway runs just over the railing. Please call and ask your reservations agent for details.

CS SINGLE OUTSIDE STATEROOM WITH VERANDA

The single outside stateroom is slightly scaled down for the single traveler, but allows you to take full advantage of the splendid features of our deluxe veranda staterooms.

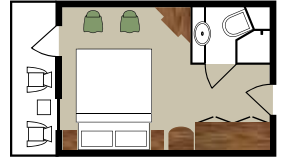
- ★ 160 sq. ft.
- ★ Shower
- ★ Private Veranda
- ★ One Twin Bed
- ★ Flat-screen TV
- ★ Frontier Deck



E VERANDA STATEROOMS

Enjoy a great value with our efficient, yet spacious veranda staterooms. Your semi-private veranda provides a quiet place to watch the ever-changing scenery.

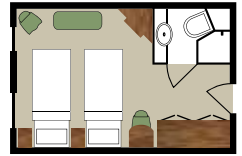
- ★ 150 sq. ft.
- ★ Two Twin Beds or One Queen Bed
- ★ Shower
- ★ Flat-screen TV
- ★ Semi-private Veranda
- ★ Vista View Deck



D OUTSIDE STATEROOMS WITH WINDOW

This large stateroom provides a cozy atmosphere and spectacular river views through generously sized windows.

- ★ 180 sq. ft.
- ★ Two Twin Beds or One Queen Bed
- ★ Shower
- ★ Flat-screen TV
- ★ Explorer Deck



TERMS & CONDITIONS

GENERAL

The transportation of guests and baggage onboard the vessels of American Queen Steamboat Company is governed by these Terms and Conditions and the Passage Ticket Contract which will be sent to you approximately four (4) weeks prior to your vacation and is available upon request or online at www.aqsc.com. Your payment of deposit or full fare constitutes agreement to the terms and conditions of the Passage Ticket Contract, whose provisions shall prevail, which includes limitations and exonerations of the liabilities and obligations of Carrier. You should read and understand these terms and conditions carefully before making a deposit. The *American Queen*, *American Empress* and *American Duchess* are operated by American Queen Steamboat Operating Company, LLC, are regularly inspected by the U.S. Coast Guard, are American flagged, and employ American officers, crew and staff.

DEFINITIONS

The terms "you" and "Guests" refer to any and all person(s) named on the front of the Confirmation and include all children or others under the care or control of the named person(s). The term "Carrier" includes American Queen Steamboat Company, its parent and affiliated entities, the vessels, the owners, charterers, operators, agents, and masters and crews thereof, any substituted or connecting ship, the owners, charterers and operators and all launches belonging to any such ship or owned or operated by the owners, charterers or operators. The term "Fare" includes voyage fare as well as all hotel, land package(s), and shore excursions purchased from Carrier.

Fares are in U.S. Dollars, are per guest, are based on double occupancy, and do not include air or land transportation. Fares for SI, SO and CS Categories are based on single occupancy. Port charges of \$109 to \$537 per guest are additional and not included in the fare. All fares, itineraries, themes, entertainment, shore excursions and other voyage attributes are subject to change without notice and we reserve the right to honor any published prices that we determine were erroneous due to printing, electronic or clerical error.

DEPOSIT AND FINAL PAYMENT

For confirmation of individual reservations, a deposit of \$500 per person is due within three (3) days of your initial reservation for non-promotional fares. The balance of the voyage fare is due ninety (90) days before departure, and all reservations not fully paid at such time will be canceled and subject to the cancellation provisions set forth in the cancellation policy below. American Queen Steamboat Company accepts the following forms of payment: MasterCard, Visa, Discover, Diner's Club, American Express or check. Reservations made ninety (90) days or less before the departure date will require payment in full at the time of booking.

CANCELLATION & CHANGE POLICY

Guests who must cancel or change their voyage or any part of their vacation package for any reason, including medical or family reasons, are subject to the fees as outlined below. All fares are based on double occupancy; on reservations in which one guest cancels, the remaining guest is responsible for paying any and all single supplements. Please see the Travel Protection section for details on cancellation protection. American Queen Steamboat Company reserves the right to cancel all reservations for which final payment is not received ninety (90) days prior to the sail date. All cancellations or changes are subject to a \$250 per person administrative fee per cruise and/or per segment if a multiple cruise booking.

Days Prior to Departure

Per Person Fees

Up to 91 days	\$250 per person administrative
90-61 days	50% of gross fare
60-31 days	75% of gross fare
30-0 days	100% of gross fare

Travel Protection premiums are non-refundable after a 10-day review period provided you have not departed on your trip or filed a claim. Carrier is not obligated to refund any portion of the fare or other payments for guests who must leave the voyage prematurely for medical or other reasons.

TRAVEL PROTECTION INFORMATION

Travel Protection plans are available from various insurance providers and are recommended. Plans can be obtained that provide protection in the event of trip cancellation, trip interruption, unexpected sickness or injury or damage to baggage or personal effects. We recommend that you purchase travel protection to help provide coverage up to 100% of your vacation cost as there are no exceptions to American Queen Steamboat Company's cancellation penalties.

A Travel Protection plan, provided by Travel Insurance Services, can be purchased through American Queen Steamboat Company to help provide coverage for trip cancellation, trip interruption, travel delay, medical expenses, baggage and personal effects and baggage delay. The pre-existing medical condition exclusion can be waived if the travel protection premium is paid with 14 days of the initial voyage deposit. Please refer to the Description of Coverage, found at www.AQSC.com/your-voyage/travel-protection for a summary of the plan details on benefits, coverages, limitations and exclusions.

Please call American Queen Steamboat Company Reservations toll free at 1-888-749-5280 for pricing and details.

INCLUDED IN YOUR FARE

- One (1) night pre-cruise hotel stay with transfer to the vessel*
- Bottled water and soft drinks
- Select wine and beer at dinner
- All meals onboard the vessel
- All standard shore excursions
- All onboard entertainment
- Wi-Fi/Internet onboard the vessel

*May not be applicable to voyages less than nine (9) days. Please check itinerary for details.

NOT INCLUDED IN YOUR FARE

- Port Charges
- Airfare to and from your home city
- Transfer to and from the airport
- Alcoholic beverages
- Optional premium shore excursions
- Discretionary gratuities to vessel crew and tour operators
- Travel Protection Plan

HOTEL STAYS

One included pre-voyage hotel night is provided as part of the voyage fare on all voyages nine (9) days or longer. Additional pre-voyage hotel nights may be purchased for an additional charge. Guests are required to present a credit card upon hotel check-in to cover their incidental charges. Post-voyage hotel nights are not included in the voyage fare and may be purchased for an additional charge. A maximum of three pre-voyage and three post-voyage hotel nights is allowed for any booking. In lieu of an included pre-voyage hotel night on any voyage, a \$50 per person onboard credit is available upon request and dependent upon voyage date. On a back-to-back voyage, two included hotel nights or a combination of one included hotel night plus a \$50 per person onboard credit will be granted in lieu of taking a second included hotel night. Additional room night availability is based on the AQSC standard annual rate and is not guaranteed. The AQSC pre-voyage hotel may offer a direct promotional rate throughout the year that is lower than the AQSC standard annual rate.

ADVANCE TRAVEL INFORMATION

U.S. citizens or permanent residents of the U.S. traveling exclusively inside U.S. borders do not need a passport or visa for travel. Homeland Security laws require that all guests travel with government-issued photo identification (ID) (such as a driver's license) at all times. ID must be presented at the time of boarding. Guests without proper ID will be denied boarding. Carrier is required to provide all guests' ID information including ID number, expiration date and place of issue to the Coast Guard and/or other government entities prior to the vessel's departure. Guests must provide this information to Carrier in advance. Travel documents will not be released until received. Canadian citizens or permanent residents of Canada entering the U.S. are required to bring their passport. For other nationalities, passports are required to enter the U.S. It is your responsibility to check with your local U.S. embassy/consulate to confirm visa requirements and to obtain the proper visa.

DOCUMENTATION

Final travel documents, including itinerary and vouchers (if applicable) will be sent approximately four (4) weeks prior to departure. Reservation must be paid in full and guest identification information must be received before documents will be sent.

HEALTH & DISABILITY REQUIREMENTS

Guests must notify us in writing at the time of booking of any physical or mental illness, disability or other conditions for which special accommodations or the use of a wheelchair is necessary or contemplated. Also, we must be notified of any medical treatment that may render the guest unfit for travel or constitute a risk or danger to the guest or anyone else on board. The vessels do not carry a medical doctor aboard. Acute medical conditions will require you to

disembark to be attended to by shoreside emergency and/or medical response. Guests needing any form of assistance and those who are physically disabled must be accompanied by someone who will take full responsibility for any needed assistance during the cruise and in the event of an emergency. We reserve the right to refuse passage to anyone who, in our sole opinion, may affect the health, safety or enjoyment of other guests. Guests requiring a wheelchair must provide their own collapsible wheelchair. Please be aware that some ports of call, shore excursions, docks, gangways and other requirements may preclude a wheelchair guest from leaving the vessel; this decision will be made by the ship's captain and is binding. Also, there may be certain physical conditions, including raised doorway thresholds from 2 to 16 inches, stairways and narrow passageways within the vessel that may limit or preclude the accessibility of wheelchair guests to some areas. We recommend you purchase travel protection, either the plan we offer or a plan from your Travel Agent. With travel protection you can relax and enjoy your trip with peace of mind.

FEDERAL MARITIME COMMISSION PROTECTION

Under Public Law 89-777, the FMC requires vessels having berth or stateroom accommodations for 50 or more passengers and which embark passengers from U.S. ports to maintain acceptable evidence of financial responsibility to indemnify passengers for nonperformance of transportation. American Queen Steamboat Company maintains an escrow agreement to protect passenger payments for water transportation. This escrow agreement has been reviewed and approved by the Federal Maritime Commission.

UNITED STATES FLAGGED VESSELS

The *American Queen*, *American Empress* and *American Duchess* have been designed and built in the United States. As U.S. Flagged Vessels, this status means that we also protect you with the highest standards for safety and health, including regular inspections and certifications by the United States Coast Guard, The United States Public Health Service, and the Federal Communications Commission. The vessels are American owned and operated. As U.S. Flagged Vessels, the *American Queen*, *American Empress* and *American Duchess* are capable of operating unique itineraries not possible on foreign-owned or foreign-built vessels.

ONBOARD CREDIT

Can be used toward onboard purchases not covered in the cruise fare. Onboard credit is non-refundable, non-transferable, has no cash value and may not be used to pay gratuities. Any unused portion of an onboard credit is forfeited at the end of the voyage.

SMOKING

Smoking is permitted only in designated outside areas aboard the *American Queen*, *American Empress* and *American Duchess*. All interiors of the vessels including all cabins, staterooms, dining rooms and lounges are strictly non-smoking.

DINING ARRANGEMENTS

The *American Queen* and *American Empress* offer open seating for breakfast and lunch; there are two seating times for dinner. To make a seating request, please call your Travel Agent, group leader, or our Reservations Department at your earliest convenience after making a reservation. We will make every effort to honor your request; however, actual seating assignments are not guaranteed and can only be confirmed at time of departure. The *American Duchess* offers open-seating for breakfast, lunch and dinner.

GAMBLING

Gambling is not available or permitted on the *American Queen*, *American Empress* or *American Duchess*.

ANIMALS

Only designated service animals are permitted onboard. You are required to notify American Queen Steamboat Company in advance of departure if you plan to bring along a service animal because of a disability. Supporting documents may be requested.

GRATUITIES

Gratuities of \$17.50 per guest per day will be automatically charged to your onboard account.

Terms and conditions are accurate at time of printing, are subject to change without notice and we are not responsible for errors or omissions therein. For the latest terms and conditions, visit www.AQSC.com.

© 2017 American Queen Steamboat Operating Company, LLC



TRAVEL PROTECTION

Missing a vacation is bad enough. Losing the money you have paid for it is even worse. We are pleased to offer a protection plan to cover yourself and your vacation investment with American Queen Steamboat Company's Travel Protection Plan.

The Travel Protection Plan, provided by Travelex Insurance Services, offers a packaged plan to help you relax and enjoy your trip. We recommend that you purchase travel protection to help provide coverage for up to 100% of your vacation cost, as there are no exceptions to American Queen Steamboat Company's cancellation penalties.

The Travel Protection Plan provides an easy way to help protect your vacation investment. Once paid, the premium is non-refundable after a 10 day review period, provided you have not departed on your trip or filed a claim, and the coverage is non-transferable. The pre-existing medical conditions exclusion is waived if your premium is received within fourteen (14) days of your initial voyage deposit.

Ask your Travel Agent or one of our Cruise Specialists for details when making your reservation.

PLAN BENEFITS	MAXIMUM COVERAGE PER PERSON (UP TO THE LIMITS BELOW)
TRIP CANCELLATION	100% OF INSURED TRIP COST
TRIP INTERRUPTION	150% OF INSURED TRIP COST
TRAVEL DELAY	\$750 (\$150/DAY)
MISSED CRUISE CONNECTION	\$750
BAGGAGE AND PERSONAL EFFECTS	\$2,500
BAGGAGE DELAY	\$250
EMERGENCY MEDICAL & DENTAL EXPENSE	\$50,000 (\$750 DENTAL SUBLIMIT)
EMERGENCY MEDICAL EVACUATION/REPATRIATION	\$250,000
TRAVEL ASSISTANCE & CONCIERGE SERVICES†	INCLUDED

TRIP COST	PLAN COST PER PERSON AGE 0-59	PLAN COST PER PERSON AGE 60+
UP TO \$2,500	\$124	\$250
\$2,501 TO \$3,500	\$216	\$351
\$3,501 TO \$4,500	\$270	\$452
\$4,501 TO \$5,500	\$347	\$553
\$5,501 TO \$6,500	\$424	\$655
\$6,501 TO \$7,500	\$501	\$756
\$7,501 AND UP	CALL FOR A QUOTE	CALL FOR A QUOTE

†Travel Assistance & Concierge Services are provided by the designated provider listed in the Description of Coverage. The above is a brief description of benefits. For a summary of the plan details on benefits, coverages, limitations and exclusions of the insurance plan, refer to the Description of Coverage found under the Terms and Condition section on the website. Travel Insurance is underwritten by Transamerica Casualty Insurance Company, Columbus, OH; NAIC #10952. 1263096



All-Inclusive Beverage Package: Our all-inclusive beverage package affords you carefree enjoyment of your favorite spirits, beer and wine by the glass throughout the length of your voyage. Ask for more details and package pricing when booking your voyage.

SAVE UP TO \$2,400 ON 2018 U.S. RIVER CRUISES

*Save \$2,400 per suite (\$1,200 per person) on this *American Duchess* 2018 voyage: 07/15. Save \$1,000 per stateroom (\$500 per person) on these *American Queen* 2018 voyages: 02/25, 04/01, 07/01, 07/08, 07/15, 07/22, 08/19, 12/16, 12/23; on these *American Empress* 2018 voyages: 03/17, 03/21, 03/25, 03/29, 04/01, 07/01, 11/12, 11/16, 11/20; and on these *American Duchess* 2018 voyages: 01/04, 01/07, 01/14, 01/21, 01/28, 03/25, 04/02. Save \$800 per stateroom (\$400 per person) on these *American Queen* 2018 voyages: 03/04, 03/11, 03/18, 03/25, 11/18, 11/25, 12/02, 12/09, 12/30; on this *American Empress* 2018 voyage: 11/04; and on these *American Duchess* 2018 voyages: 02/18, 02/25, 03/04, 03/11, 03/18, 08/05, 08/12, 08/19, 08/26, 11/18, 12/23. Save \$600 per stateroom (\$300 per person) on these *American Queen* 2018 voyages: 02/19, 02/22, 09/09; on these *American Empress* 2018 voyages: 04/08, 04/15, 04/22, 04/29, 10/21, 10/28; and on these *American Duchess* 2018 voyages: 04/08, 05/06, 05/27, 06/03, 06/10, 06/17, 09/02, 12/03, 12/10, 12/16, 12/30. Save \$400 per stateroom (\$200 per person) on these *American Queen* 2018 voyages: 04/08, 04/15, 04/22, 04/29, 05/06, 05/13, 05/20, 05/27, 06/03, 06/10, 06/17, 06/24, 07/29, 08/05, 09/16, 09/23, 09/30, 10/07, 10/14, 10/21, 10/28, 11/04, 11/11; on these *American Empress* 2018 voyages: 05/06, 05/13, 05/20, 05/27, 06/03, 06/10, 06/17, 06/24, 07/08, 07/15, 07/22, 07/29, 08/05, 08/12, 08/19, 08/26, 09/02, 09/09, 09/16, 09/23, 09/30, 10/07, 10/14; and on these *American Duchess* 2018 voyages: 04/15, 04/22, 04/29, 05/13, 05/20, 09/16, 09/23, 09/30, 10/07, 10/14, 10/21, 10/28, 11/04, 11/11, 11/25. *American Queen* offers not valid on categories OS, SO and SI. *American Empress* offers not valid on category CS. *American Duchess* offers not valid on categories OS and LFS.

Offer expires on 12/30/2017 and is only valid on new, paid-in-full bookings. Full payment at time of booking is required to redeem this offer. Offer is based on cabin availability and only while inventory lasts. Not valid on Group bookings or existing reservations; cannot be combined with other promotions or discounts. Promotional fares and amenities are capacity controlled, may vary by sailing and may be withdrawn without notice. Cruise fares quoted are in U.S. dollars, are per person and do not include government taxes and fees, port charges, gratuities, airfare, insurance, personal expenditures, and transportation costs incurred while traveling to and from embarkation ports. Not responsible for errors or omissions. Additional terms and conditions may apply - call for details.

DXSJ091517

 AMERICAN QUEEN®
STEAMBOAT COMPANY

ONE COMMERCE SQUARE
40 SOUTH MAIN STREET, 21ST FLOOR
MEMPHIS, TN 38103

SAVE
up to
\$2,400
per stateroom

SEE PAGE 71



FOR MORE INFORMATION AND RESERVATIONS,
CONTACT YOUR PROFESSIONAL TRAVEL AGENT OR:

(888) 749-5280 ★ WWW.AQSC.COM