

Today



Monday, 9 March 2015

Dress Code: CASUAL

LADIES: Casual dress or trousers.

GENTLEMEN: Open-neck shirt and smart casual trousers.

Sunrise: 7.33am

Sunset: 7.01pm

GMT+1

Weather Forecast:

Winds: SSW'y

Force: 3 - 4

Sky: Partly cloudy

Temp: 14°C / 57°F

CRUISE ITINERARY:

Saturday, 7 March
Southampton, England

Sunday, 8 March
Saint Peter Port, Guernsey

Monday, 9 March
Cherbourg, France

Tuesday, 10 March
Le Havre, France

Wednesday, 11 February
Southampton, England

RECEPTION
Deck 7 Aft
Open 24 hours
7777 or 7200

ROOM SERVICE 5333

MEDICAL CENTRE
Deck 4 Forward
Open: 8.30am - 11.00am and
5.00pm - 6.00pm
Tel: 4000 (During Clinic Hours)
Out of Hours in the event of an
emergency please dial 7777

Cherbourg, France

Facing the English Channel at the tip of the Cotentin peninsula, Cherbourg has been of strategic importance since Roman times. Back in the 4th century, Cherbourg was a fortified Roman military camp known as Corallium, and by 1450 was the centre of fierce fighting in the Hundred Years' War. The city and its castle were consolidated and fortified by Vauban in the 17th century. The city saw further action in World War Two, occupied by the Germans in 1940 before finally being liberated by US forces on 26th June 1944. Its port accommodates a range of activities, from fishing and commercial shipping to passenger ferries and cruise liners; the Titanic called here on its ill-fated maiden voyage in 1912. Contemporary Cherbourg is also a city of art and culture - the Italian-style theatre, the Sainte-Trinité basilica, the city's museums and the renowned Cité de la Mer aquarium are not to be missed.



What you need to know:

8.00am MV Saga Sapphire is scheduled to dock at **France**.

10.30pm All Aboard! Shortly afterwards **MV Saga Sapphire** prepares to sail for **Le Havre, France**.

PORT AGENT: AGENA TRAMP, 156, RUE VICTOR HUGO BP 1446 - 76 066 LE HAVRE CEDEX, LE HAVRE

TEL: +33 (0) 2 3519 2785 / FAX: +33 (0) 2 3519 7285 / MOBILE: +33 603 830 431.

Ship's Telephone Number: 0044 1303 774948. Take your *Today* Programme ashore with you, if you become lost, make use of the above information. N.B. You must always take your **white swipe card** with you to go ashore.

EXCHANGE RATE: The unit of currency used in **Cherbourg, France** is the **Euro** which will be available from Reception at these rates: **Sell: UK £1.00 = €1.33 / Buy: UK £1.00 = €1.51**

Foreign exchange will close tomorrow, 10 March at 10.00pm.

The approximate exchange rates ashore are:

UK £1.00 = €1.37 / US \$1.00 = €0.88 / AU \$1.00 = €0.69 / CA \$1.00 = €0.71

GOING ASHORE: There will be a complimentary shuttle bus service operating from the ship to town centre. The first shuttle bus to leave **Saga Sapphire** will be at **9.00am** and will run approximately every **20 minutes** throughout the day, with the last one leaving the **town** at **6.00pm. Please expect queues at peak times.**

THE ACADEMY: There is a selection of reference books in the Academy which you are welcome to make use of. We respectfully request that you do not remove the books from the Academy, so that they can be enjoyed by your fellow passengers. We also have DVDs, Personal CD Players and Audio Books for you to enjoy in the comfort of your cabin. If you would like to borrow one, please see Lee during his opening hours in the Academy, where you will need to sign for anything that you take away.

FOR YOUR HEALTH: Sanitising gels and wipes are provided around the ship; please make use of these before entering dining outlets and when returning from ashore. In self-service food areas, please use the utensils provided and avoid re-using plates, cups or bottles. When sneezing or coughing use a tissue, discard, and then wash your hands. **At any symptom of sickness or diarrhoea, please immediately contact the medical centre on 4000 (7777 out of hours).** There are no charges for consultations resulting from these symptoms, except for treatment for motion sickness.

French Reverie

ISSUE 3



SHORE EXCURSION DEPARTURE INFORMATION

All tours depart from the Britannia Lounge.

Please go to the Britannia Lounge to collect your numbered disembarkation sticker at the indicated time:

CHERBO01	D-Day Beaches	8.15am
CHERBO02	Bayeux Tapestry & War Museum	8.45am
CHERBO03	Val de Saire	1.30pm

For your comfort and safety, disembarkation will be by group number. Please remember to have your Shore Excursion Ticket and white swipe card with you when going ashore. Announcements for tours will only be audible in the Britannia Lounge. Do not congregate on the gangway.

Your Duty Cruise Team are **Rebecca, Resty and Rebecca R.**





Morning

8.00am	MV <i>Saga Sapphire</i> is scheduled to dock at Cherbourg, France.	
8.00am	CROSSWORDS AND SUDOKU Puzzles are supplied for you to take away for your enjoyment.	Aviators Bar (7)
9.15pm	INDEPENDENT TRAVELLERS If you would like to meet like-minded passengers wishing to go ashore independently Rebecca R. will introduce you to each other before you depart.	Bottom of the Fish (5)
9.30am	GOLF PUTTING Join Rebecca and Resty to aim for a hole in one.	Verandah Deck Aft (9)
10.30am	RING TOSS Join Rebecca and Resty for this fun game.	Verandah Deck Aft (9)
11.30am	DECK QUOITS Enjoy the fresh air with Rebecca for a round or two of this nautical favourite.	Deck (12) Midship

Afternoon

1.15pm	INDEPENDENT TRAVELLERS If you would like to meet like-minded passengers wishing to go ashore independently, Rebecca R. will introduce you to each other before you depart.	Bottom of the Fish (5)
1.45pm	WHIST, SCRABBLE BOARDGAME ENTHUSIASTS Meet Rebecca and Resty who will organise a game with your fellow guests (providing sufficient players are present).	Card Room (8)
2.00pm	GENERAL KNOWLEDGE QUIZ Join Rebecca and Resty for this light-hearted trivia session.	Drawing Room (11)
2.00pm	CLASSIC COMEDY Enjoy classic comedy from <i>Some Mothers Do Eve Em.</i>	Cooper's Bar (8)
3.30pm	DARTS Meet Rebecca and Resty at the oche for a game of killer darts.	Verandah Deck Aft (9)
4.15pm	AFTERNOON TEA Enjoy a delicious selection of cakes, sandwiches and scones, with Tregothnan tea and musical accompaniment from Musical Director, Henry Burnett.	Britannia Lounge (8)

Evening

6.00pm	EARLY EVENING TUNES Join Martin Orbidans for pre-dinner cocktails and toe tapping tunes.	Cooper's Bar (8)
6.15pm	<div>  <div> CLASSICAL CONCERT <i>The Tiffany String Quartet</i> presents 'French Masters' featuring works by <i>Delibes, Massenet and Franc.</i> </div>    </div>	Drawing Room (11)
6.30pm	EARLY EVENING DANCING AND COCKTAILS Beautiful music from our resident duo, Perfect Mood.	Britannia Lounge (8)
8.45pm	MUSIC FOR DANCING Latin and Ballroom dancing with our Gentlemen Host and music courtesy of The Perfect Mood Duo.	Britannia Lounge (8)
8.45pm	MUSICAL MELODIES Our resident pianist, Martin will be delighted to play your requests at the piano.	Cooper's Bar (8)
8.45pm	TEAM TRIVIA Take part in this fun general knowledge quiz in teams of up to six with Rebecca.	Drawing Room (11)
9.00pm	EVENING MOVIE <i>The Italian Job</i> - 1969; 95 Minutes.	Academy (4)
9.25pm	EASY LISTENING Music from The Saga Trio until 10.10pm.	Drawing Room (11)
9.30pm	CABARET SHOWTIME MV <i>Saga Sapphire</i> proudly presents The Zoots 60s' Band . We continue this evening's entertainment with music for dancing from The Perfect Mood Duo and our Gentlemen Host.	Britannia Lounge (8)
10.15pm	TUNES FROM THE PIANO Join Martin in Coopers Bar for fun and entertainment on the piano.	Cooper's Bar (8)
10.15pm	LATE NIGHT MELODIES with resident favourites, Lily & Zoltan, The Saga Trio.	Drawing Room (11)
10.30pm	LATE NIGHT JAZZ Enter The Sapphire Jazz Club as The Saga Orchestra take us on a journey through some of your Jazz favourites. We continue the evening with The Saga Trio until Late.	Drawing Room (11)
10.30pm	ALL ABOARD! MV <i>Saga Sapphire</i> prepares to sail for Le Havre, France an approximate distance of 76 nautical miles.	
10.30pm	LATE NIGHT BITES A selection of late night snacks from our food and beverage team.	Verandah (9)



John Martin, Comedian

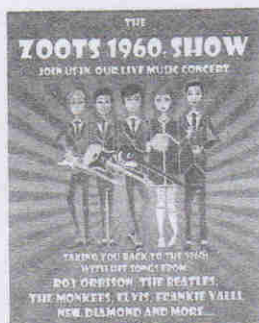


John Martin has been a professional comedian for nearly 30 years. Starting almost from school, John became the UK's first Government-sponsored comedian when he received £40 a week under the enterprise allowance scheme. Since then, John has literally travelled the world delighting audiences with his clean, fresh comedy. This experience, together with his encyclopedic knowledge of jokes makes John a true master of his craft. John has also spent years writing material for huge comedy stars such as Ken Dodd, Jimmy Tarbuck and the late Bob Monkhouse. Ken Dodd on ITV's Parkinson show described John as "a marvelous comedian" and named John as his personal favourite comic today. What an accolade!

Guinness Book of Records

A journalist once described John as a 'human joke factory' when he smashed the World Record for continuous joke telling, which lasted an amazing 101 hours 39 minutes - an incredible feat!
John has an extraordinary gift of ad-lib and whether it be a corporate or cabaret performance he enjoys utilising this talent to the full, often receiving standing ovations for his razor-sharp wit. His ability to do this, with rapier-like speed, has earned John the title 'The World's First Interactive Comedian'.
John is also very much in demand by people with knowledge and power; having performed for the Institute of Directors and at The Houses of Parliament. He has also performed for the Labour Party and at Conservative Party Conference Dinners. So impressed were the latter organisers that they immediately booked John's services for the following year.
John has also appeared on numerous television shows.

This evening's entertainment...the choice is yours...



In the Britannia Lounge...

at 8.45pm Music for dancing

with **The Perfect Mood Duo** and our **Gentlemen Host**
and at 9.30pm **MV Saga Sapphire**

Proudly presents

The Zoots

'Taking you back to the 1960's'
with hit songs from Roy Orbison, The Beatles,
The Monkees, Elvis, Frankie Valli, Neil Diamond and more...



We continue the evening with music for dancing from **The Perfect Mood Duo** and our **Gentlemen Hosts**.



In the Drawing Room...

8.45pm Team Trivia with **Rebecca**

followed by **Easy Listening** with **The Saga Trio**.

At 10.30pm **Late Night Jazz!** Back by popular demand

Enter **The Sapphire Jazz Club** as **The Saga Orchestra** take us
on a journey through some of your Jazz favourites.

We continue the evening with **The Saga Trio** until Late.



SAGA SAPPHIRE TV

Please note that ship's announcements can be heard on Channel 4 and will interrupt the sound on all channels

Channel 1	Safety Instructions DVD	Channel 6	Only Fools & Horses
Channel 2	Tour of the Saga Sapphire	Channel 7	The Theory and Everything
Channel 3	View from the Bridge	Channel 8	The Italian Job - 1969; 95 Minutes
Channel 4	Ship's Position / Ship's Announcements	Channel 9	Performances and Lectures Live
Channel 5	Sapphire in Normandy by Graeme Payne	Channel 10-19	Satellite Permitting

Channel 8 Movies will commence at the following times: Midnight, 7.00am, 10.00am, 2.00pm, 5.00pm and 9.00pm



Decléor Hair & Beauty

DECK 2 FORWARD

The Spa: 8.00am - 1.00pm & 2.00pm - 7.00pm **Ext: 2200.**

The Salon: 8.00am - 1.00pm & 2.00pm - 7.00pm

Gym: 7.00am - 7.00pm; **Swimming Pool:** 8.00am - 7.00pm;

Even when the Spa is open, there is no lifeguard on duty at either pool.

INTENSIVE SCALP MASSAGE AND CONDITIONING TREATMENT

This luxurious treatment from Carita is usually £17 but today it's complimentary with any of our hair services.

DECLÉOR WARM STONE MASSAGE

This heavenly massage uses the warmth of heated stones to ease every bit of tension, soothing the body & mind.

RESTAURANT OPENING HOURS

(Expect a queue at peak times)

BREAKFAST

The Verandah (9 Upper Stb Side - 9U) 7.00am - 9.30am

Pole to Pole (7) 7.30am - 9.00am

Daily Fish & Chips and Burger (Weather Permitting)

The Beach Club (11) 11.30am - 3.00pm

LUNCH

The Verandah (9 Upper Stb Side - 9U) 12noon - 2.00pm

Pole to Pole (7) 12noon - 1.30pm

AFTERNOON TEA

Britannia Lounge (8) 4.15pm - 5.00pm

DINNER

The Verandah (9 Upper Stb Side - 9U) 7.00pm - 9.00pm

Pole to Pole (7) 7.00pm - 9.00pm

East to West (9 Upper Port Side - 9U) 7.00pm - 9.00pm

LATE NIGHT BITES

The Verandah (9 Upper Stb Side - 9U) 10.30pm - 11.15pm

BAR OPENING HOURS

Verandah Bar (9) Weather Permitting 10.00am - 10.30pm

Aviators Bar (7) 10.00am - 11.00pm

Britannia Lounge Bar (8) 8.30pm - 11.30pm

Drawing Room (11) 10.00am - Late

Cooper's (8) 5.30pm - Late

DRINK OF THE DAY

Between the Sheet £4.50

Paradise (non-alcoholic) £2.75

Baileys Coffee (hot drink) £3.95

COMPUTER ASSISTANCE

THE ACADEMY - DECK (4) AFT

If you would like to borrow an iPad, iPod Touch, Kindle or any DVDs; or if you need any assistance with your own device, visit Lee today at these times 5.30pm - 6.30pm and 8.15pm - 9.00pm.

LIBRARY

LIBRARY - DRAWING ROOM, DECK (11) FORWARD, PORT SIDE

If you would like any information about the Library, a member of the Cruise Staff will be available between 10.30am - 11.00am & 3.30pm - 4.00pm & 4.00pm - 5.00pm the library is open 24 hours a day.

Shopping Today!

DECK (8) AFT

All Shops Shop Closed

Please be advised that during our stay in Cherbourg, France all our retail stores will remain closed. We hope you enjoy your time ashore and look forward to seeing you tomorrow.

TOURS OFFICE

Reception Desk, Deck 7 Aft

Closed Today

There will be one lucky winner drawn at the end of the cruise who will receive a £100 credit onto their on-board account. Don't forget to hand in your Shore Excursion Questionnaires to the drop box located at the 'Tours and Travel Desk'. Good luck!

ONBOARD EXCHANGE RATES:

Reception Desk, Deck (7) Aft

Open today: 8.00am - 10.00pm

Euros will be available through this cruise. We accept cash, cheques and travellers' cheques. As onboard currency is Pound Sterling, all non-GBP traveller's cheques will be converted to Sterling first and then to the desired currency. It is not possible to use your white swipe card for foreign exchange.

The buy rate differs from the sell rate.

Exchange rate: Sell: UK £1.00 = € 1.33 / Buy: UK £1.00 = € 1.51

Foreign exchange will close tomorrow, 10 March at 10.00pm.

PHOTO GALLERY

Deck (8) Opposite the Entrance to the Main Shop

Open Today: 5.00pm - 10.00pm

CRUISES DVD'S

Pre-order your cruise DVDs, preview all the highlights Victoria has filmed so far, at the Photo Gallery. We have 2 DVDs this cruise; the Memories DVD captures the main events on board, and the Destinations DVD includes various tours from all the ports visited, an excellent souvenir of this marvellous trip!

CRUISE SALES DESK

Port Side of the Reception Desk, Deck 7 Aft Opposite Aviators' Bar

Open Today: 9.00am - 11.00am & 3.30pm - 6.30pm

SEARCHING FOR THE NORTHERN LIGHTS (SA294)

Saga Sapphire ~ 15 nights ~ Departing: 26 February 2016.

Ports visited: Southampton, England - Bergen, Norway - Åndalsnes, Norway - Cross the Arctic Circle - Tromsø, Norway - Alta, Norway - Narvik, North Cape, Norway - Cross the Arctic Circle - Ålesund, Norway - Southampton, England.

Cruise through the Viking heartland and cross the Arctic Circle to seek out the awesome Northern Lights. Along the way you can explore Norway's picture-perfect scenes of snow-capped mountains, majestic fjords and remote towns, and you'll stay extra-long in Alta where you can enjoy a host of winter activities.

Cruise highlights...

- The chance to travel on the Rauma Railway through the stunning Romsdalen Valley

- Possibly seeing the magical Northern Lights

- Spending three days enjoying Arctic encounters and adventures in Alta - including dogsledding and an overnight stay in an igloo hotel.

For further information on this new Saga Sapphire cruise for 2016, please see Eugene at the Cruise Sales Desk.

LAUNDRETTE

Deck 6 Forward, Port Side - Open: 8.00am - 8.00pm